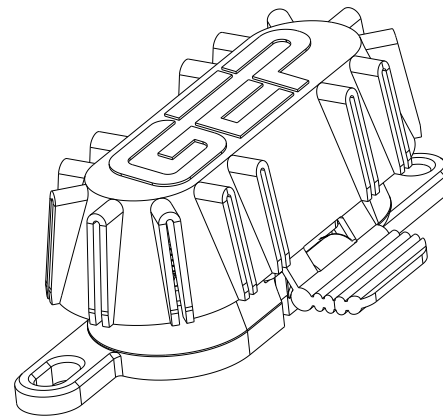


REV	REVISION DETAILS	ECO	DATE	BY	ABY
3	MOVED TO STANDALONE DRAWING. UPDATED TO LATEST DRAWING FORMAT/STANDARDS. UPDATED DESCRIPTION.	NP-006840	05-27-2025	JWK	JTW



ISO VIEW
FOR REF ONLY

CONFIDENTIAL

The information contained in this document is the property of GEP Power Products. It is not for public disclosure. Possession of the information does not convey any right to loan, sell or disclose the information. Unauthorized reproduction or use of the information is prohibited. This document is to be returned to GEP Power Products upon completion of the purpose for which it is loaned or upon request.



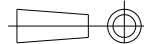
CRITICAL DIMENSIONS ON FEATURES TO BE CHECKED DURING ANY SET-UP ADJUSTMENTS, TOOL CHANGES, OR ANNUAL MAINTENANCE ON TOOLING.



DIMENSIONS OR FEATURES TO BE CHECKED FROM RUN-TO-RUN

TOLERANCES UNLESS OTHERWISE SPECIFIED

THIRD ANGLE PROJECTION



METRIC TOL

ENGLISH TOL

ANGULAR TOL= $\pm 2^\circ$
FRACTION TOL= $\pm 1/64$ IN

1 PL DEC. = $\pm .25$
2 PL DEC. = $\pm .13$

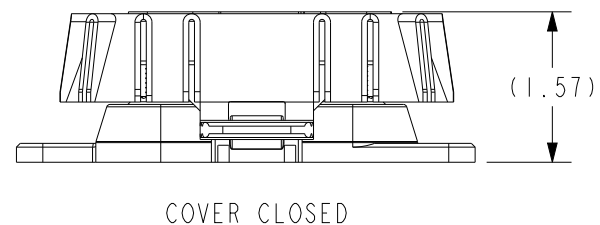
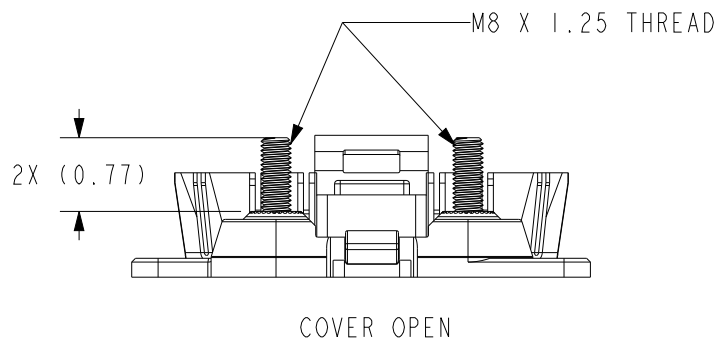
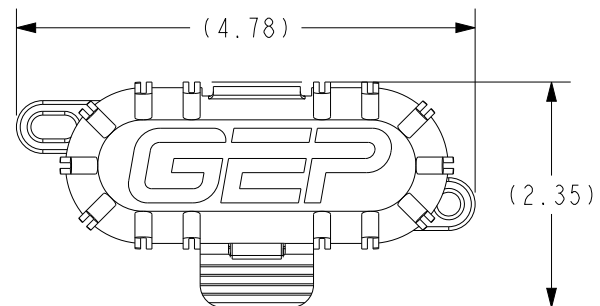
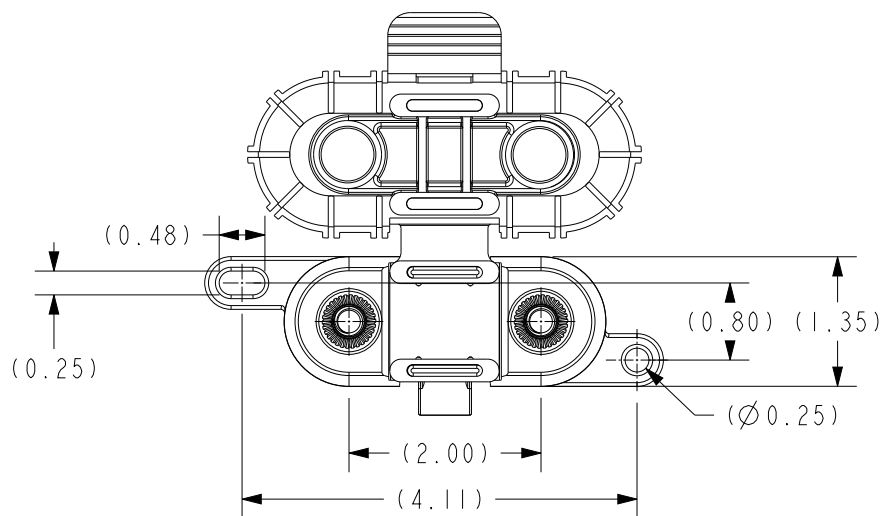
2 PL DEC. = $\pm .01$
3 PL DEC. = $\pm .005$

DIMENSIONS INSIDE PARENTHESES OR CONTAINING "REF" ARE FOR REFERENCE ONLY.

COPYRIGHT - GEP POWER PRODUCTS

This is unpublished work. The disclosure of this work is limited to a select personnel. Further dissemination or disclosure to the public is PROHIBITED. This unpublished work is protected by Federal Copyright law and all rights thereunder are reserved by GEP Power Products.

GEP POWER PRODUCTS		16830 Pheasant Drive Brookfield, WI 53005			
PART NO:		MFH-M10-SB (SALES)			
DESCRIPTION:		MFH ASSEMBLY - METRIC - ZINC - SOFT COVER - BLACK			
CUSTOMER:		STANDARD			
ENGLISH (IN)	REV	SHEET	SCALE	SIZE	
	3	1 OF 2	1:1.5	A	



NOTES:

1. MATERIAL: STUDS - ZINC PLATED STEEL
BASE - GLASS FILLED NYLON
COVER - PVC
2. COLOR: BASE - BLACK
COVER - BLACK
3. RoHS AND REACH COMPLIANT

GEP POWER PRODUCTS		16830 Pheasant Drive Brookfield, WI 53005		
PART NO:		MFH-M10-SB (SALES)		
DESCRIPTION:		MFH ASSEMBLY - METRIC - ZINC - SOFT COVER - BLACK		
CUSTOMER:		STANDARD		
ENGLISH (IN)	REV 3	SHEET 2 OF 2	SCALE 1:2	SIZE A