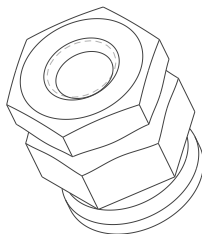


REV	REVISION DETAILS	ECO	DATE	BY	ABY
1	CHANGED DIM	12013	04-03-12	JK	RR
2	UPDATED FORMAT	NP-0492	08-28-17	CE	JL
3	UPDATED SALT SPRAY TO 72H TO REFLECT TESTING, REMOVED INCORRECT THREAD DEPTH, NET WEIGHT 40.6 WAS 36 GRAMS, CORRECTED DRAWING TITLE 3/8"-16 WAS 1/2 IN.	NP-1514	03-13-2019	JJW	JL



ISO VIEW
FOR REF ONLY

CONFIDENTIAL

The information contained in this document is the property of GEP Power Products. It is not for public disclosure. Possession of the information does not convey any right to loan, sell or disclose the information. Unauthorized reproduction or use of the information is prohibited. This document is to be returned to GEP Power Products upon completion of the purpose for which it is loaned or upon request.



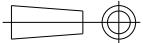
CRITICAL DIMENSIONS ON FEATURES TO BE CHECKED DURING ANY SET-UP ADJUSTMENTS, TOOL CHANGES, OR ANNUAL MAINTENANCE ON TOOLING.



DIMENSIONS OR FEATURES TO BE CHECKED FROM RUN-TO-RUN

TOLERANCES UNLESS OTHERWISE SPECIFIED

THIRD ANGLE PROJECTION



METRIC TOL

ENGLISH TOL

ANGULAR TOL= $\pm 2^\circ$
FRACTION TOL= $\pm 1/64$ IN

1 PL DEC. = $\pm .25$
2 PL DEC. = $\pm .13$

2 PL DEC. = $\pm .01$
3 PL DEC. = $\pm .005$

DIMENSIONS INSIDE PARENTHESES OR CONTAINING "REF" ARE FOR REFERENCE ONLY.

COPYRIGHT - GEP POWER PRODUCTS

This is unpublished work. The disclosure of this work is limited to a select personnel. Further dissemination or disclosure to the public is PROHIBITED. This unpublished work is protected by Federal Copyright law and all rights thereunder are reserved by GEP Power Products.

GEP
POWER PRODUCTS

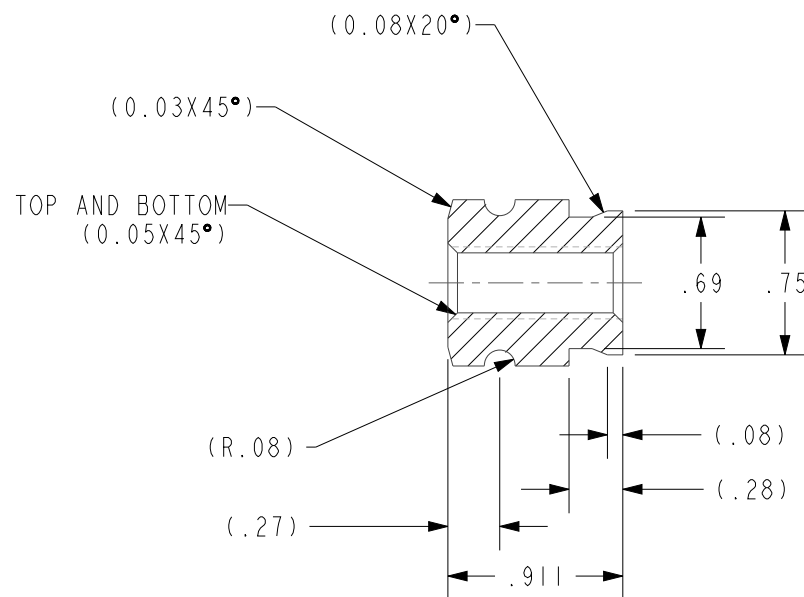
16830 Pheasant Drive
Brookfield, WI 53005

PART NO: C02-1003

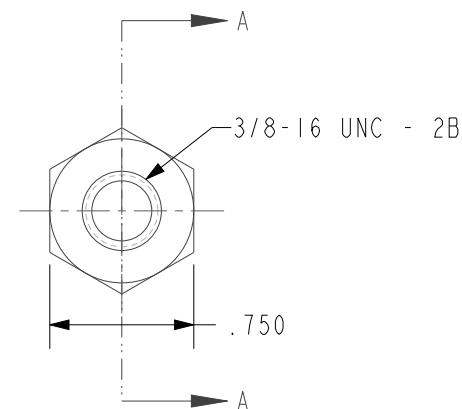
DESCRIPTION: NUT - 3/8"-16 DOUBLE NUT, ZINC PLATING

CUSTOMER: STANDARD

ENGLISH (IN)	REV 3	SHEET 1 OF 2	SCALE 1:1	SIZE A
--------------	----------	-----------------	--------------	-----------



SECTION A-A



NOTES:

1. MATERIAL: STEEL 1045
2. NET WEIGHT: 40.6 GRAMS
3. DIMENSIONS ARE AFTER PLATING PROCESS
4. REMOVE ALL BURRS AND SHARP EDGES
5. FINISH: ZINC PLATING MIN. THICKNESS .0003" PER ASTM B633 TEST PERIOD 72H

GEP POWER PRODUCTS		16830 Pheasant Drive Brookfield, WI 53005			
PART NO:		C02-1003			
DESCRIPTION:		NUT - 3/8"-16 DOUBLE NUT, ZINC PLATING			
CUSTOMER:		STANDARD			
ENGLISH (IN)	REV	SHEET	SCALE	SIZE	
	3	2 OF 2	1:1	A	