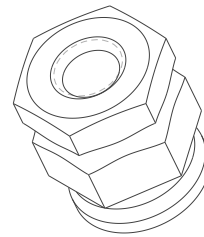


REV	REVISION DETAILS	ECO	DATE	BY	ABY
1	CHANGED DIM	12013	04-03-12	JK	RR
2	UPDATED FORMAT	NP-0493	08-28-17	CE	JL
3	REMOVED INCORRECT THREAD DEPTH, AND NET WEIGHT 40.6 WAS 36 GRAMS	NP-1515	03-13-2019	JJW	JL



ISO VIEW
FOR REF ONLY

CONFIDENTIAL

The information contained in this document is the property of GEP Power Products. It is not for public disclosure. Possession of the information does not convey any right to loan, sell or disclose the information. Unauthorized reproduction or use of the information is prohibited. This document is to be returned to GEP Power Products upon completion of the purpose for which it is loaned or upon request.



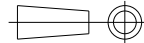
CRITICAL DIMENSIONS ON FEATURES TO BE CHECKED DURING ANY SET-UP ADJUSTMENTS, TOOL CHANGES, OR ANNUAL MAINTENANCE ON TOOLING.



DIMENSIONS OR FEATURES TO BE CHECKED FROM RUN-TO-RUN

TOLERANCES UNLESS
OTHERWISE SPECIFIED

THIRD ANGLE PROJECTION



METRIC TOL

ENGLISH TOL

ANGULAR TOL= $\pm 2^\circ$
FRACTION TOL= $\pm 1/64$ IN

1 PL DEC. = $\pm .25$
2 PL DEC. = $\pm .13$

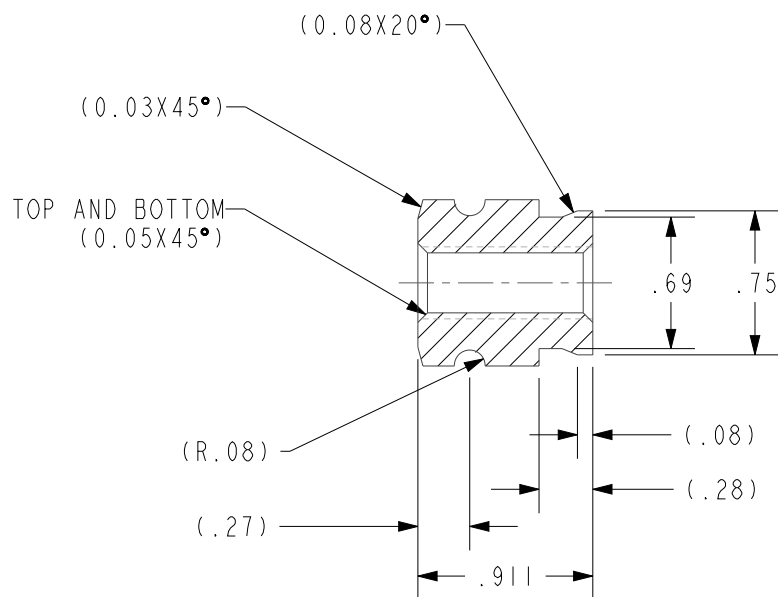
2 PL DEC. = $\pm .01$
3 PL DEC. = $\pm .005$

DIMENSIONS INSIDE PARENTHESES
OR CONTAINING "REF" ARE FOR
REFERENCE ONLY.

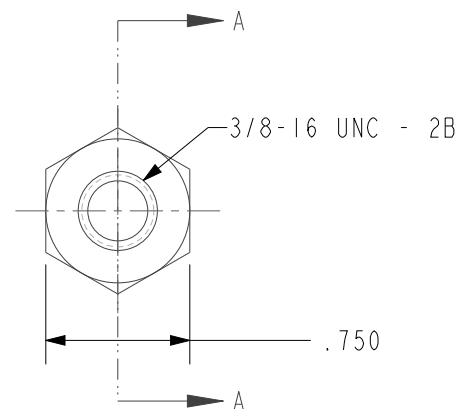
COPYRIGHT - GEP POWER PRODUCTS

This is unpublished work. The disclosure of this work is limited to a select personnel. Further dissemination or disclosure to the public is PROHIBITED. This unpublished work is protected by Federal Copyright law and all rights thereunder are reserved by GEP Power Products.

		16830 Pheasant Drive Brookfield, WI 53005			
PART NO:		C02-1003-ZN			
DESCRIPTION:		NUT - 3/8"-16 DOUBLE NUT, ZINC NICKEL PLATING			
CUSTOMER:		STANDARD			
ENGLISH (IN)	REV 3	SHEET 1 OF 2	SCALE 1:1	SIZE A	



SECTION A-A



NOTES:

1. MATERIAL: STEEL 1045
2. NET WEIGHT: 40.6 GRAMS
3. DIMENSIONS ARE AFTER PLATING PROCESS
4. REMOVE ALL BURRS AND SHARP EDGES
5. FINISH: MINIMUM $.0002''$ ZINC NICKEL TRIVALENT
HC TNT 12 - 1000 HOURS TO RED RUST

GEP POWER PRODUCTS		16830 Pheasant Drive Brookfield, WI 53005			
PART NO:		C02-1003-ZN			
DESCRIPTION:		NUT - $3/8''-16$ DOUBLE NUT, ZINC NICKEL PLATING			
CUSTOMER:		STANDARD			
ENGLISH (IN)	REV 3	SHEET 2 OF 2	SCALE 1:1	SIZE A	