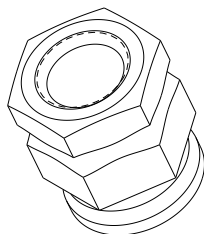


REV	REVISION DETAILS	ECO	DATE	BY	ABY
1	CHANGED DIM	12013	04-03-12	JK	RR
2	UPDATED FORMAT	NP-0491	08-28-17	CE	JL
3	.911 WAS .917, UPDATED THREAD CALL-OUT, AND FORMAT	NP-002558	04-29-2020	JJW	JML



ISO VIEW
FOR REF ONLY

CONFIDENTIAL

The information contained in this document is the property of GEP Power Products. It is not for public disclosure. Possession of the information does not convey any right to loan, sell or disclose the information. Unauthorized reproduction or use of the information is prohibited. This document is to be returned to GEP Power Products upon completion of the purpose for which it is loaned or upon request.



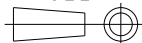
CRITICAL DIMENSIONS ON FEATURES TO BE CHECKED DURING ANY SET-UP ADJUSTMENTS, TOOL CHANGES, OR ANNUAL MAINTENANCE ON TOOLING.



DIMENSIONS OR FEATURES TO BE CHECKED FROM RUN-TO-RUN

TOLERANCES UNLESS
OTHERWISE SPECIFIED

THIRD ANGLE PROJECTION



METRIC TOL

ENGLISH TOL

ANGULAR TOL= $\pm 2^\circ$
FRACTION TOL= $\pm 1/64$ IN

1 PL DEC. = $\pm .25$
2 PL DEC. = $\pm .13$

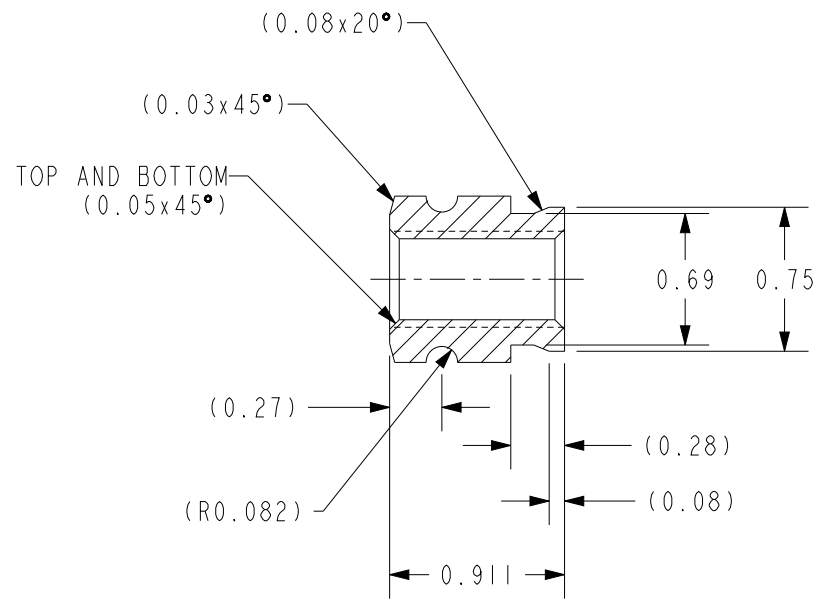
2 PL DEC. = $\pm .01$
3 PL DEC. = $\pm .005$

DIMENSIONS INSIDE PARENTHESES
OR CONTAINING "REF" ARE FOR
REFERENCE ONLY.

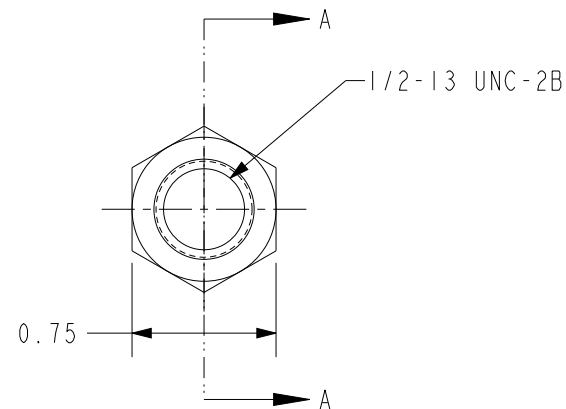
COPYRIGHT - GEP POWER PRODUCTS

This is unpublished work. The disclosure of this work is limited to a select personnel. Further dissemination or disclosure to the public is PROHIBITED. This unpublished work is protected by Federal Copyright law and all rights thereunder are reserved by GEP Power Products.

		16830 Pheasant Drive Brookfield, WI 53005			
PART NO:		C02-1002-ZN			
DESCRIPTION:		NUT - 1/2IN DOUBLE NUT, ZINC NICKEL PLATING			
CUSTOMER:		STANDARD			
ENGLISH (IN)	REV	SHEET	SCALE	SIZE	
	3	1 OF 2	1:1	A	



SECTION A-A



NOTES:

1. MATERIAL: STEEL 1045
2. NET WEIGHT: 36 GRAMS
3. REMOVE ALL BURRS AND SHARP EDGES
4. FINISH: MINIMUM .0002" ZINC NICKEL TRIVALENT
HC TNT 12 - 1000 HOURS TO RED RUST

GEP
 POWER PRODUCTS

 16830 Pheasant Drive
 Brookfield, WI 53005

PART NO: C02-1002-ZN

 DESCRIPTION: NUT - 1/2IN DOUBLE NUT, ZINC NICKEL
 PLATING

CUSTOMER: STANDARD

ENGLISH (IN)	REV	SHEET	SCALE	SIZE
	3	2 OF 2	1:1	A