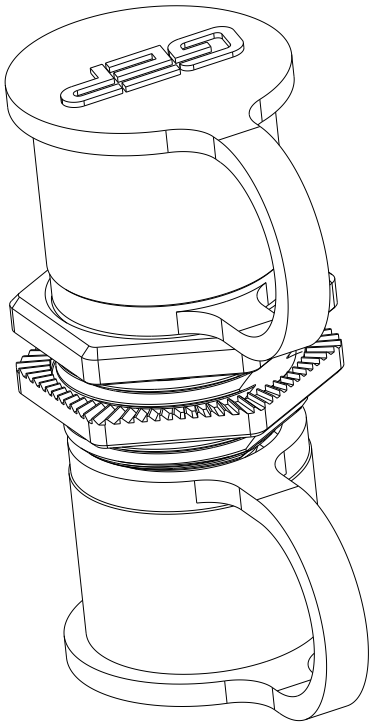


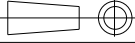



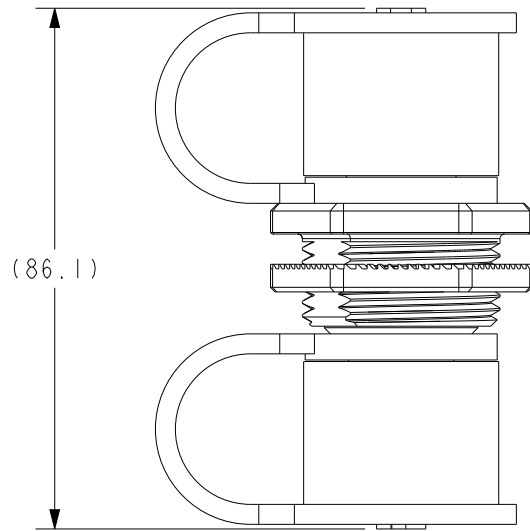
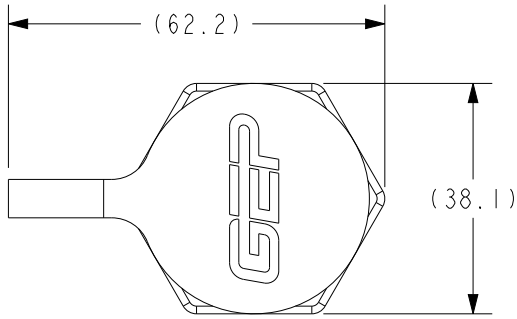
| REV | REVISION DETAILS | ECO | DATE | BY | ABY |
|-----|------------------|-----------|------------|-----|-----|
| 0 | INTIAL RELEASE | NP-006671 | 03-28-2025 | JWK | JTW |



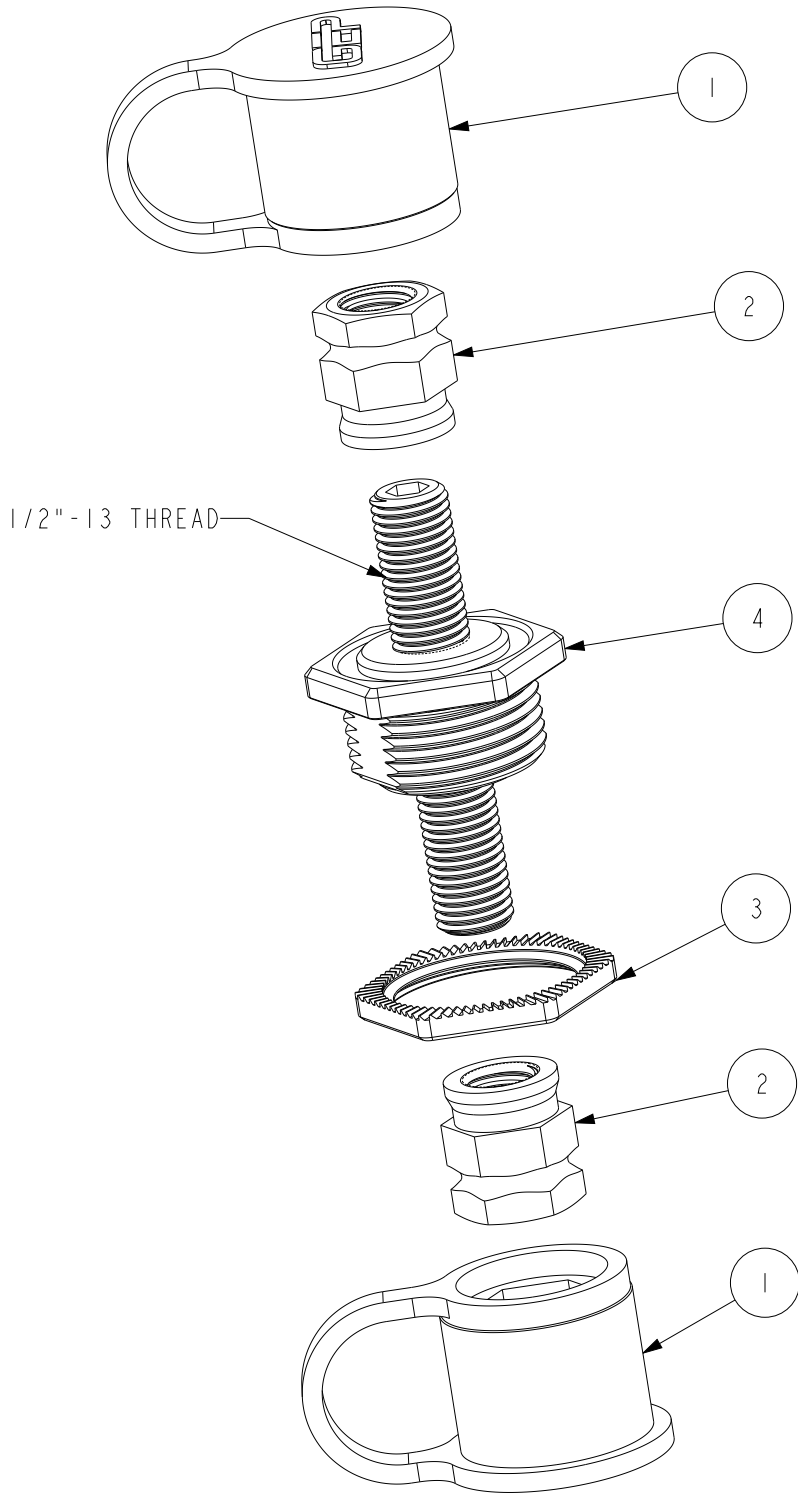
ISO VIEW
FOR REF ONLY

| | | |
|---|--|---|
| CONFIDENTIAL The information contained in this document is the property of GEP Power Products. It is not for public disclosure. Possession of the information does not convey any right to loan, sell or disclose the information. Unauthorized reproduction or use of the information is prohibited. This document is to be returned to GEP Power Products upon completion of the purpose for which it is loaned or upon request. | | |
|  CRITICAL DIMENSIONS ON FEATURES TO BE CHECKED DURING ANY SET-UP ADJUSTMENTS, TOOL CHANGES, OR ANNUAL MAINTENANCE ON TOOLING. |  DIMENSIONS OR FEATURES TO BE CHECKED FROM RUN-TO-RUN | |
| TOLERANCES UNLESS OTHERWISE SPECIFIED | | THIRD ANGLE PROJECTION  |
| METRIC TOL | ENGLISH TOL | ANGULAR TOL= $\pm 2^{\circ}$ FRACTION TOL= $\pm 1/64$ IN |
| 1 PL DEC. = $\pm .25$ 2 PL DEC. = $\pm .13$ | 2 PL DEC. = $\pm .01$ 3 PL DEC. = $\pm .005$ | DIMENSIONS INSIDE PARENTHESES OR CONTAINING "REF" ARE FOR REFERENCE ONLY. |
| COPYRIGHT - GEP POWER PRODUCTS This is unpublished work. The disclosure of this work is limited to a select personnel. Further dissemination or disclosure to the public is PROHIBITED. This unpublished work is protected by Federal Copyright law and all rights thereunder are reserved by GEP Power Products. | | |

| | | | | |
|---|----------|---|--------------|-----------|
|  | | 16830 Pheasant Drive Brookfield, WI 53005 | | |
| PART NO: | | SC61-2001A-A008 (SALES) | | |
| DESCRIPTION: | | KIT - PASS-THRU - 1/2IN-13 - HS - IMPREG - EPOXY - MBN - DBLN - BOOTS - RED | | |
| CUSTOMER: | | STANDARD | | |
| METRIC (MM) | REV 0 | SHEET 1 OF 2 | SCALE 1:1 | SIZE B |

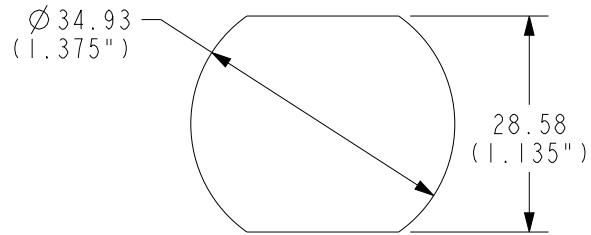


ASSEMBLED VIEW



EXPLODED VIEW

TYPICAL PANEL CUTOUT



- NOTES:
1. COLOR: BODY - RED
EPOXY - BLACK
 2. MATERIALS: BOOT - PVC
DOUBLE NUT - ZINC NICKEL PLATED STEEL
BODY LOCKNUT - STAINLESS STEEL
CORE - TIN PLATED COPPER
STUD - STAINLESS STEEL
 3. RoHS AND REACH COMPLIANT

| ITEM | DESCRIPTION | PART NO. | QTY |
|------|--|-----------------|-----|
| 1 | BOOT - PASS-THRU, RED, GEP | C03-1000-R2 | 2 |
| 2 | NUT - 1/2IN DOUBLE NUT, ZINC NICKEL PLATING | C02-1002-ZN | 2 |
| 3 | NUT - LOCKNUT, STAINLESS STEEL | C02-1001 | 1 |
| 4 | PASS-THRU - 1/2IN-13 - HS - IMPREG - EPOXY - RED | SC47-2019A-A008 | 1 |

| | | | | |
|---------------------------|----------|--|-----------------|-----------|
| GEP POWER PRODUCTS | | 16830 Pheasant Drive Brookfield, WI 53005 | | |
| PART NO: | | SC61-2001A-A008 (SALES) | | |
| DESCRIPTION: | | KIT - PASS-THRU - 1/2IN-13 - HS - IMPREG - EPOXY - MBN - DBLN - BOOTS - RED | | |
| CUSTOMER: | | STANDARD | | |
| METRIC (MM) | REV 0 | SHEET 2 OF 2 | SCALE 1:1.25 | SIZE B |