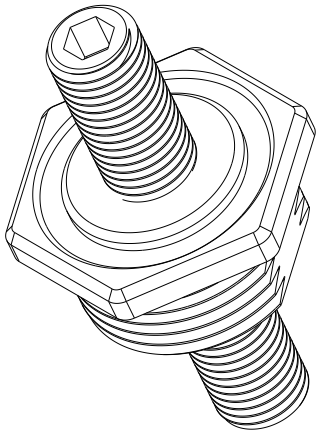


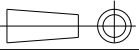



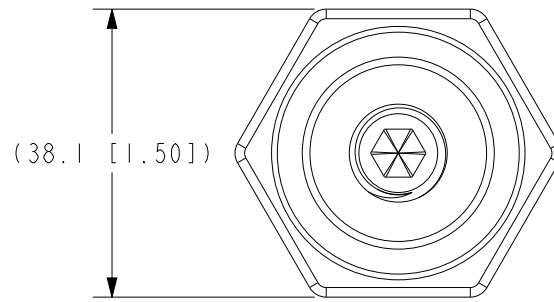
REV	REVISION DETAILS	ECO	DATE	BY	ABY
0	INITIAL RELEASE	NP-006543	01-08-2025	JWK	JTW
1	DIM (28.4) WAS (28.6). UPDATED TYPICAL PANEL CUTOUT DIMENSIONS.	NP-007070	09-16-2025	JWK	JMS



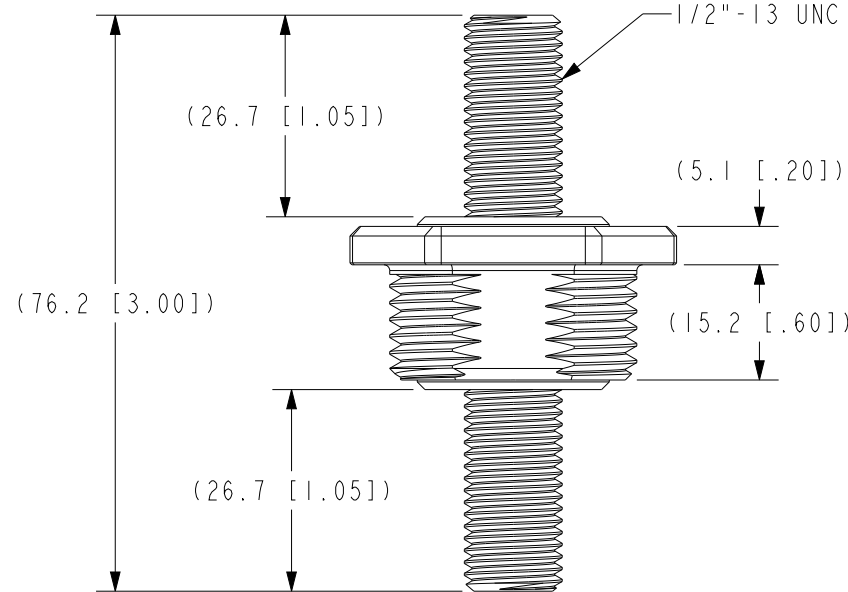
ISO VIEW
FOR REF ONLY

<p align="center">CONFIDENTIAL</p> <p>The information contained in this document is the property of GEP Power Products. It is not for public disclosure. Possession of the information does not convey any right to loan, sell or disclose the information. Unauthorized reproduction or use of the information is prohibited. This document is to be returned to GEP Power Products upon completion of the purpose for which it is loaned or upon request.</p>		
 <p>CRITICAL DIMENSIONS ON FEATURES TO BE CHECKED DURING ANY SET-UP ADJUSTMENTS, TOOL CHANGES, OR ANNUAL MAINTENANCE ON TOOLING.</p>	 <p>DIMENSIONS OR FEATURES TO BE CHECKED FROM RUN-TO-RUN</p>	
TOLERANCES UNLESS OTHERWISE SPECIFIED		<p>THIRD ANGLE PROJECTION</p> 
METRIC TOL	ENGLISH TOL	<p>ANGULAR TOL= $\pm 2^{\circ}$</p> <p>FRACTION TOL= $\pm 1/64$ IN</p>
1 PL DEC. = $\pm .25$ 2 PL DEC. = $\pm .13$	2 PL DEC. = $\pm .01$ 3 PL DEC. = $\pm .005$	DIMENSIONS INSIDE PARENTHESES OR CONTAINING "REF" ARE FOR REFERENCE ONLY.
<p align="center">COPYRIGHT - GEP POWER PRODUCTS</p> <p>This is unpublished work. The disclosure of this work is limited to a select personnel. Further dissemination or disclosure to the public is PROHIBITED. This unpublished work is protected by Federal Copyright law and all rights thereunder are reserved by GEP Power Products.</p>		

		16830 Pheasant Drive Brookfield, WI 53005		
PART NO:		SC47-2019A-A008 (SALES)		
DESCRIPTION:		PASS-THRU - 1/2IN-13 - HS - IMPREG - EPOXY - RED		
CUSTOMER:		STANDARD		
METRIC (MM)	REV 1	SHEET 1 OF 2	SCALE 1:1	SIZE A



(38.1 [1.50])



1/2"-13 UNC

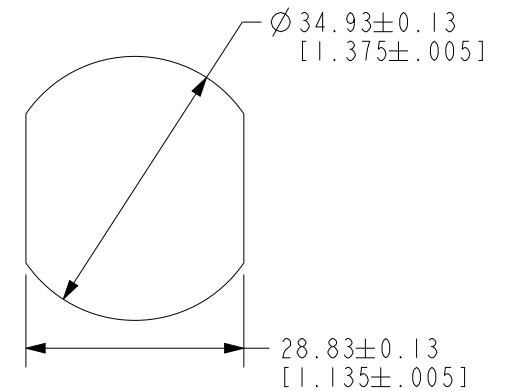
(26.7 [1.05])

(5.1 [.20])

(15.2 [.60])

(76.2 [3.00])

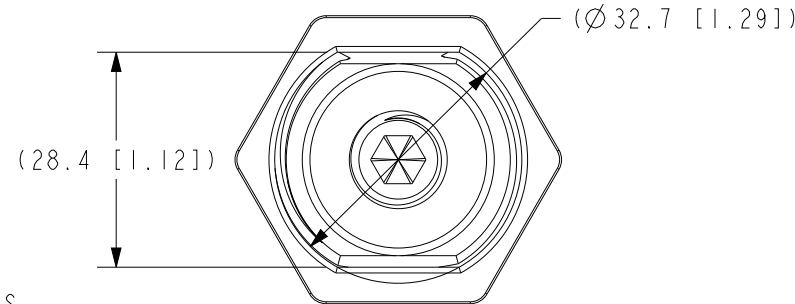
(26.7 [1.05])



$\varnothing 34.93 \pm 0.13$
[1.375 \pm .005]

28.83 ± 0.13
[1.135 \pm .005]

TYPICAL PANEL CUTOUT



($\varnothing 32.7$ [1.29])

(28.4 [1.12])

NOTES:

1. BODY COLOR: RED
EPOXY COLOR: BLACK
2. IP67 AND IP69K COMPLIANT
WHEN USED WITH CORRECT COMPONENTS
AND ASSEMBLED CORRECTLY. THIS COMPONENT
IS NOT TESTED FOR IP COMPLIANCE AS A
STAND-ALONE PART.
3. IMPREGNATED WITH SEALING MATERIAL
4. RoHS AND REACH COMPLIANT
5. UNLESS OTHERWISE SPECIFIED, DIMENSIONS ARE MM [IN]

GEP POWER PRODUCTS		16830 Pheasant Drive Brookfield, WI 53005		
PART NO:		SC47-2019A-A008 (SALES)		
DESCRIPTION:		PASS-THRU - 1/2IN-13 - HS - IMPREG - EPOXY - RED		
CUSTOMER:		STANDARD		
METRIC (MM)	REV 1	SHEET 2 OF 2	SCALE 1:1	SIZE A