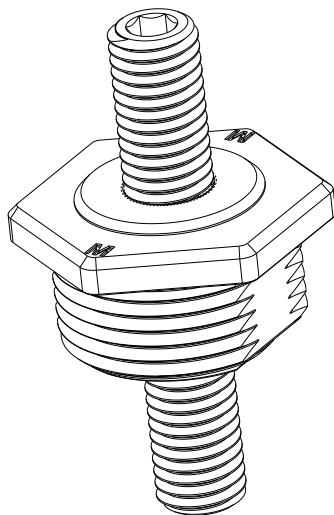


REV	REVISION DETAILS	ECO	DATE	BY	ABY
0	INITIAL RELEASE	NP-2203	12-04-2019	JJW	JML
1	UPDATED DIMENSIONS. UPDATED NOTES.	NP-006748	04-22-2025	JWK	JTW



ISO VIEW
FOR REF ONLY

CONFIDENTIAL

The information contained in this document is the property of GEP Power Products. It is not for public disclosure. Possession of the information does not convey any right to loan, sell or disclose the information. Unauthorized reproduction or use of the information is prohibited. This document is to be returned to GEP Power Products upon completion of the purpose for which it is loaned or upon request.



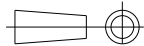
CRITICAL DIMENSIONS ON FEATURES TO BE CHECKED DURING ANY SET-UP ADJUSTMENTS, TOOL CHANGES, OR ANNUAL MAINTENANCE ON TOOLING.



DIMENSIONS OR FEATURES TO BE CHECKED FROM RUN-TO-RUN

TOLERANCES UNLESS
OTHERWISE SPECIFIED

THIRD ANGLE PROJECTION



METRIC TOL

ENGLISH TOL

ANGULAR TOL = $\pm 2^\circ$
FRACTION TOL = $\pm 1/64$ IN

1 PL DEC. = $\pm .25$
2 PL DEC. = $\pm .13$

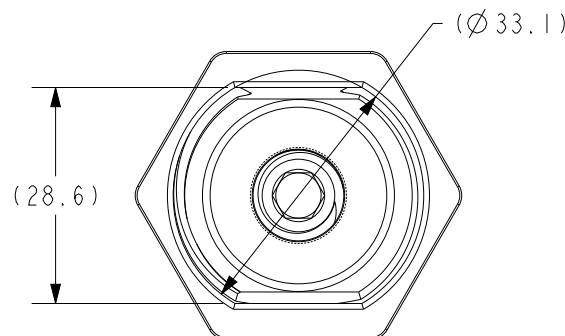
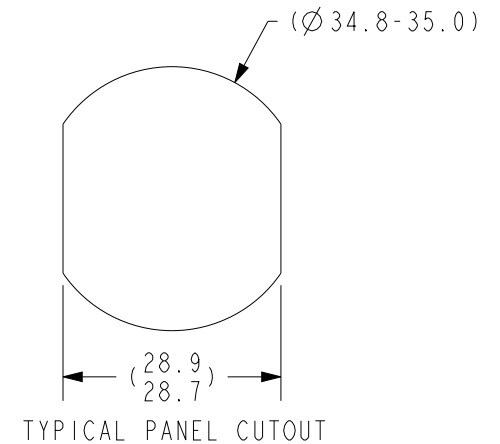
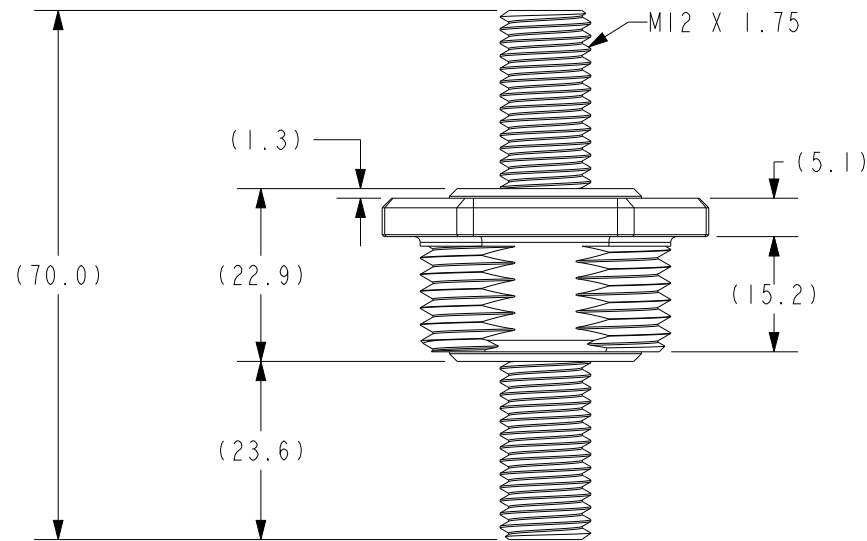
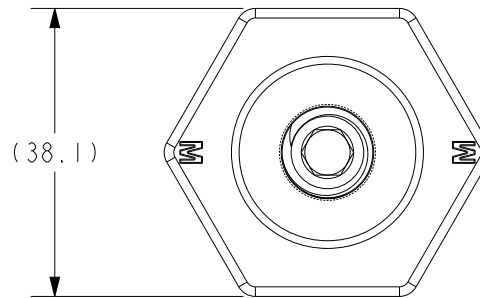
2 PL DEC. = $\pm .01$
3 PL DEC. = $\pm .005$

DIMENSIONS INSIDE PARENTHESES
OR CONTAINING "REF" ARE FOR
REFERENCE ONLY.

COPYRIGHT - GEP POWER PRODUCTS

This is unpublished work. The disclosure of this work is limited to a select personnel. Further dissemination or disclosure to the public is PROHIBITED. This unpublished work is protected by Federal Copyright law and all rights thereunder are reserved by GEP Power Products.

GEP POWER PRODUCTS		16830 Pheasant Drive Brookfield, WI 53005			
PART NO:		SC47-2012B-A008 (SALES)			
DESCRIPTION:		PASS-THRU - M12 X 1.75, (STYLE B), RED			
CUSTOMER:		STANDARD			
METRIC (MM)	REV 1	SHEET 1 OF 2	SCALE 1:1	SIZE A	



NOTES:

1. BODY COLOR: RED
2. MATERIAL: BODY - GLASS FILLED NYLON
CORE - TIN PLATED COPPER
STUD - STAINLESS STEEL
3. MAX TORQUE: M12 STUD NUTS - 54Nm (40FT-LB)
BODY MOUNTING NUT - 13Nm (10FT-LB)
4. AMPERAGE: UP TO 600A, DEPENDING ON WIRE GAUGE/BUSBAR
5. PROPER TORQUE VALUES FOR EACH APPLICATION MUST BE DETERMINED BY CUSTOMER & NOT TO EXCEED THE MAXIMUM LISTED.
6. RoHS AND REACH COMPLIANT

GEP POWER PRODUCTS		16830 Pheasant Drive Brookfield, WI 53005		
PART NO:		SC47-2012B-A008 (SALES)		
DESCRIPTION:		PASS-THRU - M12 X 1.75, (STYLE B), RED		
CUSTOMER:		STANDARD		
METRIC (MM)	REV 1	SHEET 2 OF 2	SCALE 1:1	SIZE A