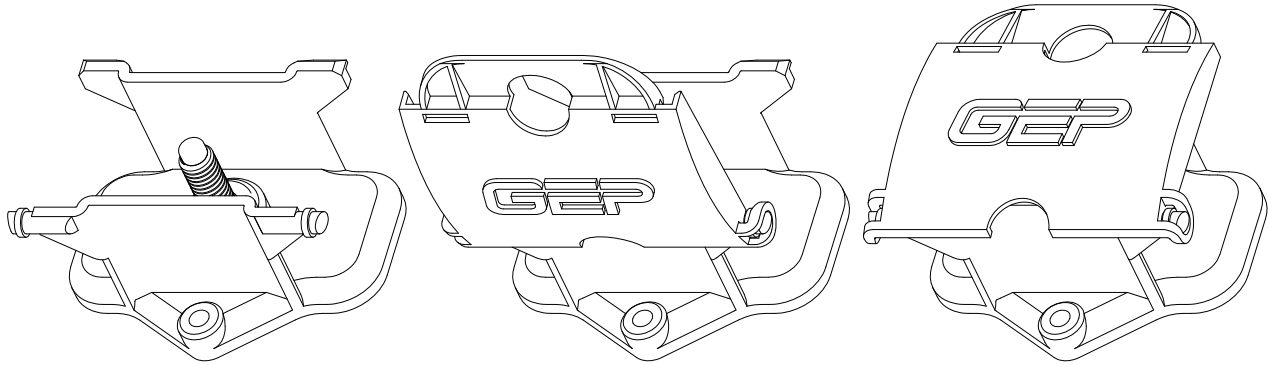


|             |                     |               |    |
|-------------|---------------------|---------------|----|
| PART NO.    | SBD-XXX-X-SALES     |               |    |
| TITLE       | POWER FEED STUD     |               |    |
| CUSTOMER    | STANDARD            |               |    |
| METRIC (mm) |                     | SCALE 1:2     |    |
| REV #       | REVISION            | DATE          | OK |
| X0          | RELEASED FOR REVIEW | 12-03<br>2008 |    |

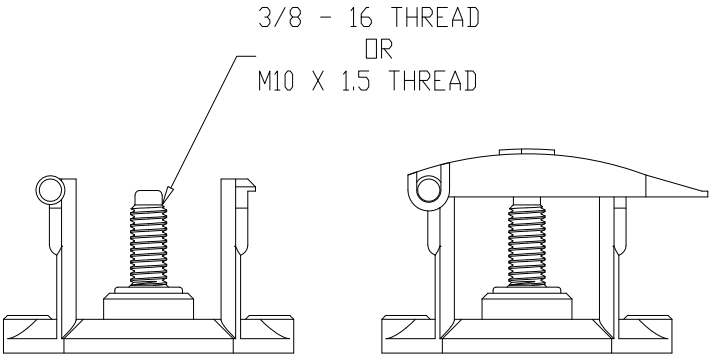
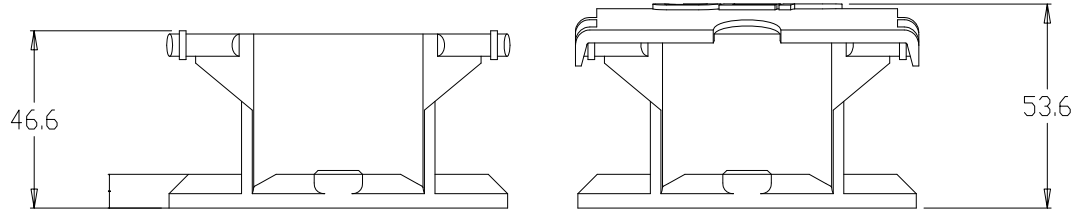
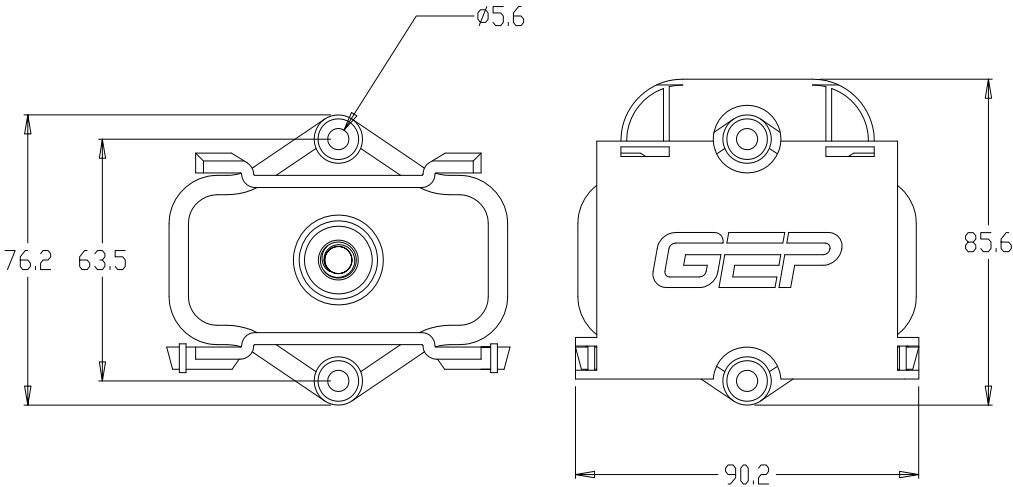


SBD-XXX

SBD-XXX-X

SBD-XXX-X

- COVER COLOR (OMIT IF NONE)  
B-BLACK  
R-RED
- HARDWARE  
0-NONE  
1-NUTS INSTALLED  
2-NUTS BULK
- STUD MATERIAL  
1-STEEL ZINC PLATED  
2-STAINLESS STEEL
- STUD THREAD  
M-METRIC M10X1.5  
U-UTS 3/8-16



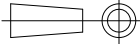
- NOTES:
1. BLOCK MATERIAL: 30% GLASS FILLED NYLON
  2. BLOCK COLOR/FINISH: BLACK/MATTE
  3. COVER MATERIAL: UNFILLED NYLON
  4. COVER COLOR/FINISH: BLACK OR RED/MATTE
  5. STUD MATERIAL:  
304 STAINLESS STEEL-NONPLATED  
STEEL GRADE 5 - ZINC PLATED
  6. MAXIMUM STUD TORQUE: 15 FT-LBS.
  7. MAXIMUM MOUNTING TORQUE: XX



765 IL Route 83 Suite 113  
Bensenville, IL. 60106

CONFIDENTIAL — The information contained in this document is the property of GEP Power Products. It is not for public disclosure. Possession of the information does not convey any right to loan, sell or disclose the information. Unauthorized reproduction or use of the information is prohibited. This document is to be returned to GEP Power Products upon completion of the purpose for which it is loaned or upon request.

COPYRIGHT — GEP Power Products  
This is an unpublished work. The disclosure of this work is limited to a select personnel. Further dissemination or disclosure to the public is PROHIBITED. This unpublished work is protected by Federal Copyright law and all rights thereunder are reserved by GEP Power Products.

| TOLERANCES<br>UNLESS OTHERWISE SPECIFIED |                                   | THIRD ANGLE PROJECTION<br> |
|--|-----------------------------------|---|
| METRIC TOL                               | ENGLISH TOL                       |   |
| 1 PL DEC.=±.25<br>2 PL DEC.=±.13         | 2 PL DEC.=±.01<br>3 PL DEC.=±.005 | ANGULAR TOL= ±2°<br>FRACTION TOL= ± 1/64 IN   |