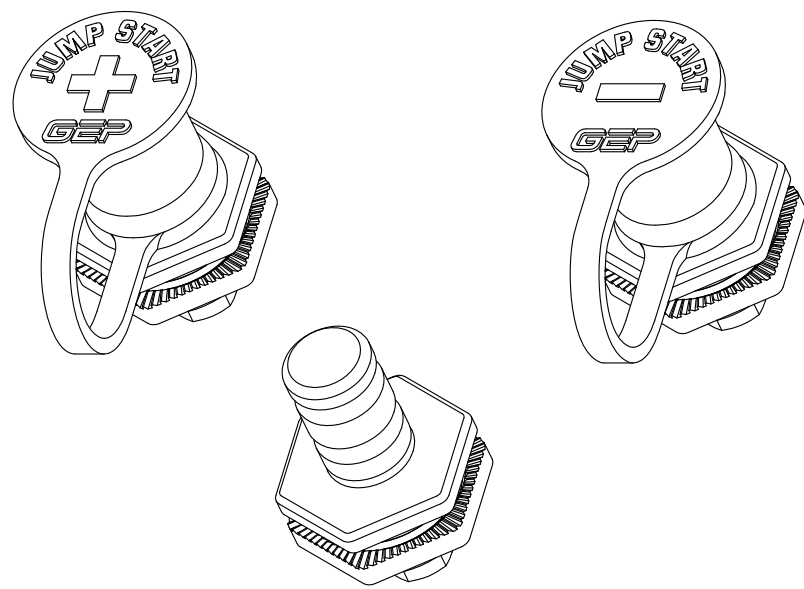
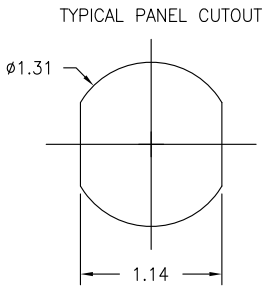
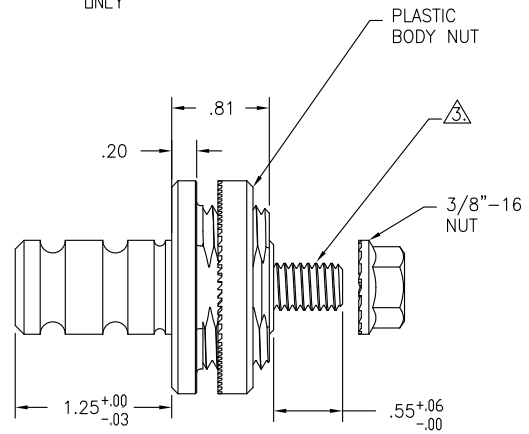
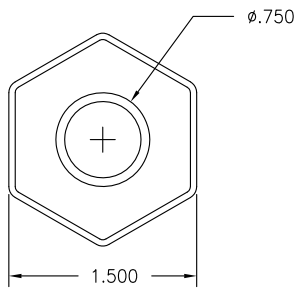


| PART NO. JSX-38A-01 (SALES) | | | | |
|--------------------------------------|--------------------------------|---------------|-----|-----------|
| TITLE JUMP START (STYLE A) - 3/8"-16 | | | | |
| CUSTOMER STANDARD | | | | |
| ENGLISH (in) | | | | SCALE 1:1 |
| REV # | REVISION | DATE | BY | APPROVE |
| 0 | INITIAL RELEASE ECN-09015 | 05-28 2009 | | |
| 1 | UPDATED NEW FORMAT, ADDED TOL. | 07-27 2012 | RRR | KS |



ISO. VIEW REF. ONLY



- NOTES:
- MATERIALS: PLASTICS - GLASS FILLED NYLON.
METAL - BRASS
 - COLOR: JSB-38A-01 - BLACK/WITH (-) NEGATIVE BOOT
JSR-38A-01 - RED/WITH (+) POSITIVE BOOT
 - STUD THREAD TYPE 3/8"-16
 - MAXIMUM TORQUE ON 3/8"-16 STUDS-20 FT.LBS. PART TO BE RESTRAINED DURING TORQUE PROCEDURE.
 - MOUNTING THREADS ARE 1" -11 1/2 NPSM.
 - MAXIMUM MOUNTING TORQUE-10 FT.LBS.
 - PARTS SUPPLIED AS SHOWN.

| TOLERANCES UNLESS OTHERWISE SPECIFIED | | THIRD ANGLE PROJECTION |
|---------------------------------------|-----------------|-------------------------|
| METRIC TOL | ENGLISH TOL | |
| 1 PL DEC.=±.25 | 2 PL DEC.=±.01 | ANGULAR TOL= ± 2° |
| 2 PL DEC.=±.13 | 3 PL DEC.=±.005 | FRACTION TOL= ± 1/64 IN |