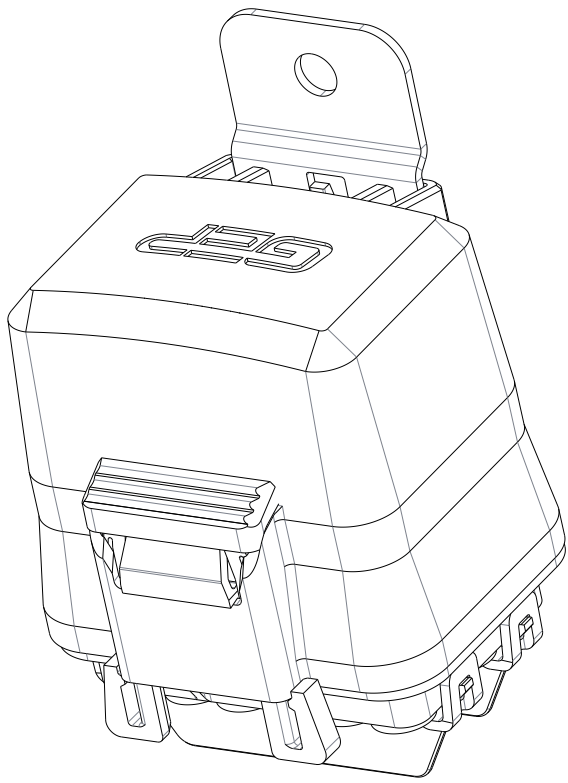


REV	REVISION DETAILS	ECO	DATE	BY	ABY
0	RELEASE FOR PRODUCTION	13187	14APR2017	RRR	JML
1	UPDATED FORMAT. ADDED VIEWS, DIMENSIONS.	NP-000822	31JAN2018	JWK	JML
2	UPDATED TO LATEST DRAWING STANDARDS ADDED PART NUMBERS SC19-2001A-A001, SC56-2000A-B001, SC55-2000A-A001. UPDATED PART NUMBER AND DESCRIPTION.	NP-006047	27MAR2024	JWK	JML
3	UPDATED NOTES	NP-006108	26AR2024	JWK	JML
4	ADDED PLUG WITH SEAL AND VENTED COVER TO ACCESSORIES. UPDATED LAYOUT OF ACCESSORIES & MOUNTING BRACKET SHEETS. UPDATED NOTES, TABLE A.	NP-007410	01MAY2026	JWK	JML



ISO VIEW FOR REF ONLY

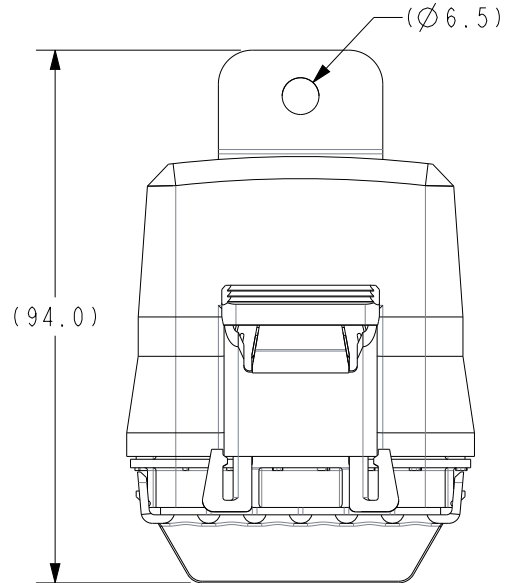
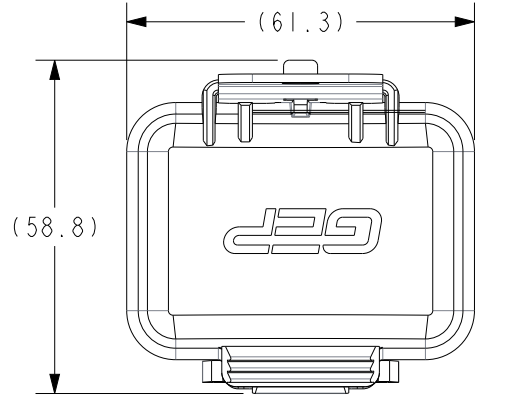
CONFIDENTIAL

The information contained in this document is the property of GEP Power Products. It is not for public disclosure. Possession of the information does not convey any right to loan, sell or disclose the information. Unauthorized reproduction or use of the information is prohibited. This document is to be returned to GEP Power Products upon completion of the purpose for which it is loaned or upon request.

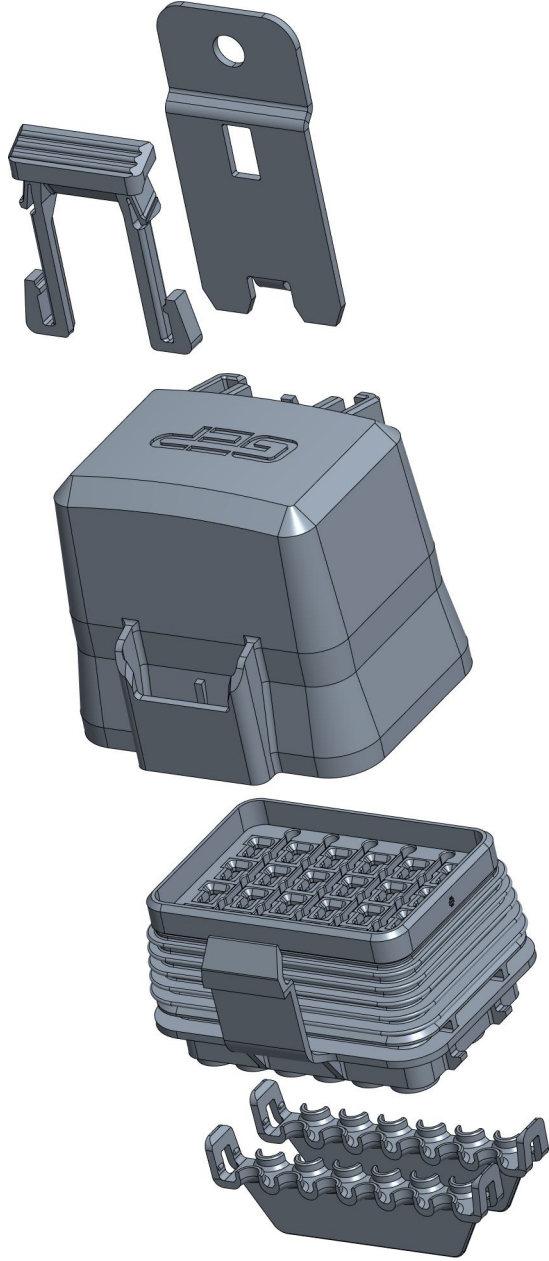
<p>▲ CRITICAL DIMENSIONS ON FEATURES TO BE CHECKED DURING ANY SET-UP ADJUSTMENTS, TOOL CHANGES, OR ANNUAL MAINTENANCE ON TOOLING.</p>	<p>○ DIMENSIONS OR FEATURES TO BE CHECKED FROM RUN-TO-RUN</p>				
<p>TOLERANCES UNLESS OTHERWISE SPECIFIED</p>	<p>THIRD ANGLE PROJECTION</p>				
<table border="1" style="width: 100%;"> <tr> <th>METRIC TOL</th> <th>ENGLISH TOL</th> </tr> <tr> <td>1 PL DEC. = ±.25 2 PL DEC. = ±.13</td> <td>2 PL DEC. = ±.01 3 PL DEC. = ±.005</td> </tr> </table>	METRIC TOL	ENGLISH TOL	1 PL DEC. = ±.25 2 PL DEC. = ±.13	2 PL DEC. = ±.01 3 PL DEC. = ±.005	<p>ANGULAR TOL = ±2° FRACTION TOL = ±1/64 IN</p> <p>DIMENSIONS INSIDE PARENTHESES OR CONTAINING "REF" ARE FOR REFERENCE ONLY.</p>
METRIC TOL	ENGLISH TOL				
1 PL DEC. = ±.25 2 PL DEC. = ±.13	2 PL DEC. = ±.01 3 PL DEC. = ±.005				
<p>COPYRIGHT - GEP POWER PRODUCTS</p> <p>This is unpublished work. The disclosure of this work is limited to a select personnel. Further dissemination or disclosure to the public is PROHIBITED. This unpublished work is protected by Federal Copyright law and all rights thereunder are reserved by GEP Power Products.</p>					

		16830 Pheasant Drive Brookfield, WI 53005	
PART NO:		FRH-A24 PDM SERIES (SALES)	
DESCRIPTION:		FRH-A24 PDM SERIES (SALES)	
CUSTOMER:		STANDARD	
METRIC (MM)	REV	SHEET	SCALE
	4	1 OF 8	1:1
			B

EXAMPLE CONFIGURATION & NOTES



EXAMPLE CONFIGURATION WITH DIMENSIONAL INFO



EXAMPLE CONFIGURATION EXPLODE VIEW

- NOTES:
1. BASE, COVER, & CPA MATERIAL: UNFILLED PBT
 2. TPA & DIODE KEY MATERIAL: NYLON
 3. COLORS: HOUSING, COVER - BLACK
SEAL - BLUE (OR RED IF MANUFACTURED BEFORE AUGUST 2026)
TPA, CPA - BLUE
 4. BRACKET MATERIAL: ZINC PLATED STEEL OR STAINLESS STEEL (SEE PART DESCRIPTION)
 5. DESIGNED TO USE DELPHI 280 METRI-PACK TERMINALS AND SEALS (SEE TABLE A)
 6. RoHS AND REACH COMPLIANT

EXAMPLE CONFIGURATION BOM			
ITEM	DESCRIPTION	PART NO.	QTY
1	BRACKET - PDM - FRH - FLAT WITH ANTI-ROTATION - ZINC STEEL	FRH-A12-MB-A1	1
2	COVER - PDM, FRH 24 POS	FRH-A24-C	1
3	CPA - PDM - FRH	FRH-A-CPA	1
4	HOUSING AND SEAL - PDM, FRH 24 POS	FRH-A24	1
5	TPA - PDM, FRH	FRH-A12-T	2

GEP POWER PRODUCTS 16830 Pheasant Drive
Brookfield, WI 53005

PART NO: FRH-A24 PDM SERIES (SALES)

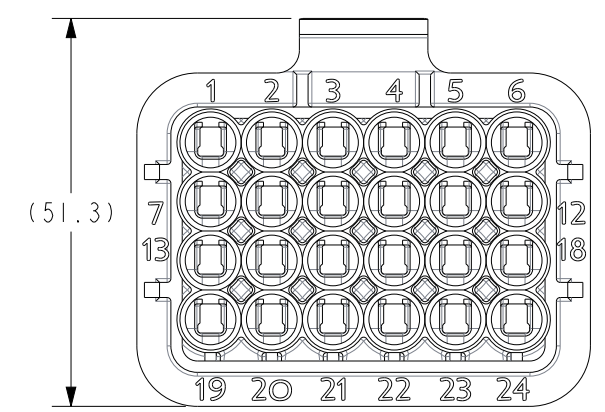
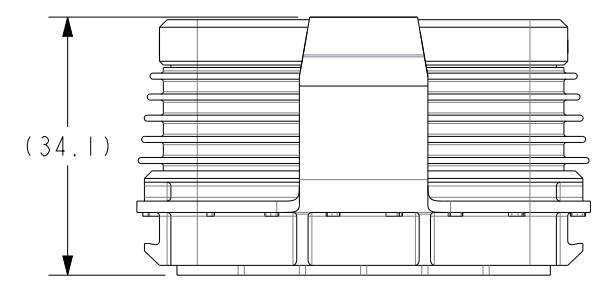
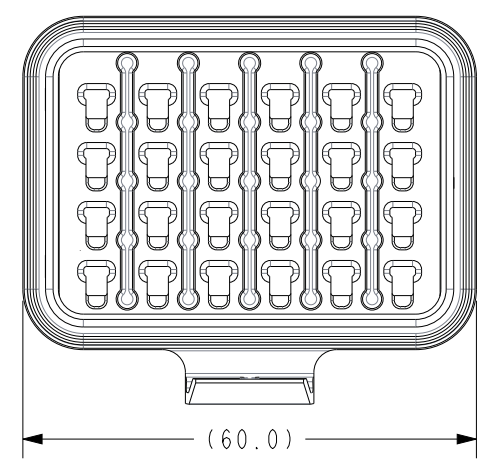
DESCRIPTION: FRH-A24 PDM SERIES (SALES)

CUSTOMER: STANDARD

METRIC (MM)	REV 4	SHEET 2 OF 8	SCALE 1:1.333	SIZE B
-------------	-------	--------------	---------------	--------

HOUSING W/SEAL OPTIONS

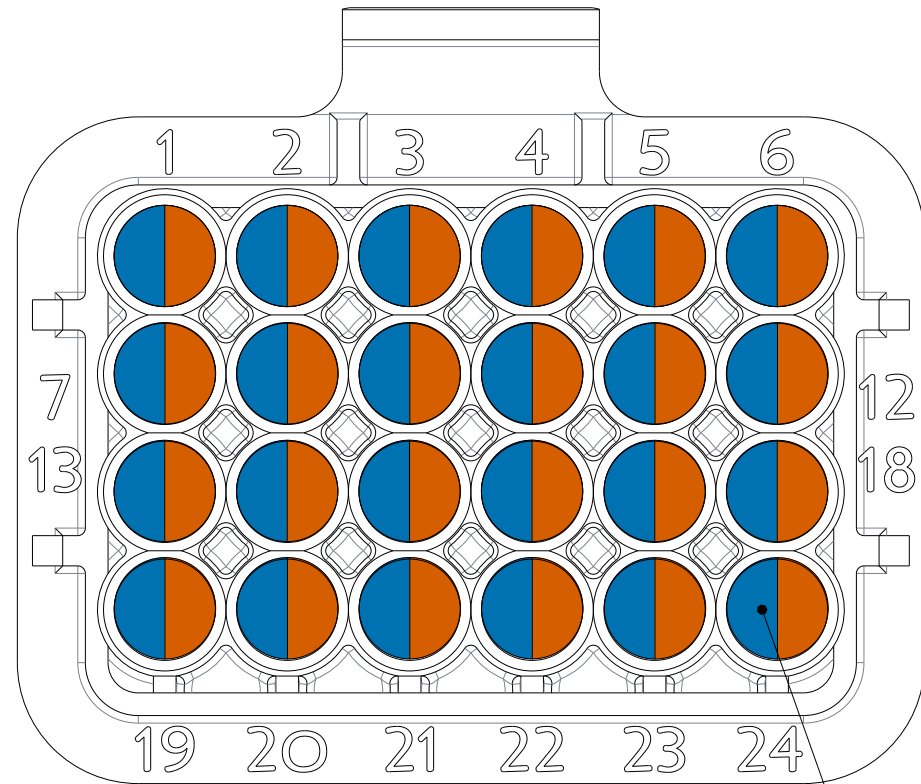
FRH-A24
 HOUSING AND SEAL - PDM, FRH 24 POS
 (FOR TERMINALS AND SEALS
 SEE TABLE A)



GEP POWER PRODUCTS		16830 Pheasant Drive Brookfield, WI 53005		
PART NO:		FRH-A24 PDM SERIES (SALES)		
DESCRIPTION:		FRH-A24 PDM SERIES (SALES)		
CUSTOMER:		STANDARD		
METRIC (MM)	REV	SHEET	SCALE	SIZE
	4	3 OF 8	1:1.5	B

HOUSING TERMINALS AND SEALS

FRH-A24
HOUSING AND SEAL - PDM, FRH 24 POS



280 CAVITIES
SEE TABLE A FOR TERMINALS
AND CABLE SEALS

Table A			REV 2
APTIV (DELPHI) 280 METRI-PACK TERMINALS			
PART NUMBER	CABLE RANGE (mm ²)	MATERIAL	PLATING
12077413	3	TIN BRASS	TIN
12129493	2.0-3.0	TIN BRASS	TIN
12077411	0.8-1.0	TIN BRASS	TIN
12084201	0.35-0.50	TIN BRASS	TIN
12176387	5	BERYLLIUM COPPER	SILVER/NICKEL
12176388	2.0-3.0	BERYLLIUM COPPER	SILVER/NICKEL
12176389	0.8-1.0	BERYLLIUM COPPER	SILVER/NICKEL
APTIV (DELPHI) 280 METRI-PACK CABLE SEALS (FOR REF. ONLY)			
PART NUMBER	CABLE DIAMETER	MATERIAL	COLOR
15324981	3.45-4.3	SILICONE	BLUE
15324980	2.81-3.49	SILICONE	LT. GRAY
15324982	2.03-2.85	SILICONE	GREEN
15324984	2.03-2.42	SILICONE	TAN
15324985	1.6-2.15	SILICONE	PURPLE
15324983	1.29-1.70	SILICONE	DK. RED
12010300	PLUG	SILICONE	GREEN
DELPHI 280 METRI-PACK TERMINAL REMOVAL TOOL (FOR REF. ONLY)			
PART # 12094430			

GEP POWER PRODUCTS 16830 Pheasant Drive
Brookfield, WI 53005

PART NO: FRH-A24 PDM SERIES (SALES)

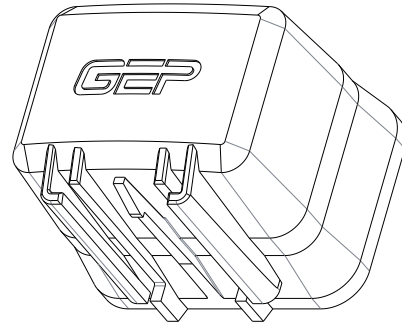
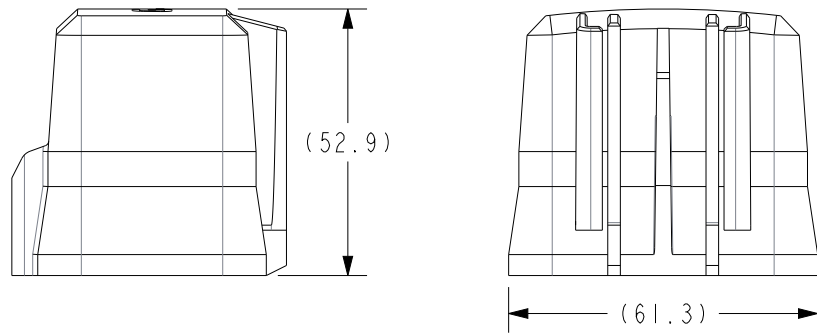
DESCRIPTION: FRH-A24 PDM SERIES (SALES)

CUSTOMER: STANDARD

METRIC (MM)	REV	SHEET	SCALE	SIZE
	4	4 OF 8	1:1.333	B

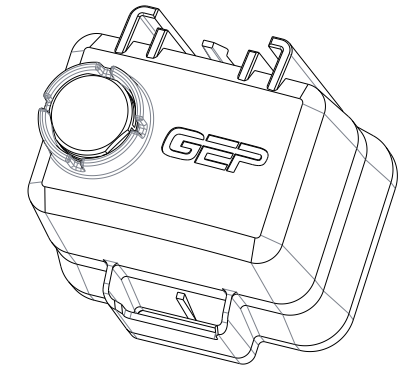
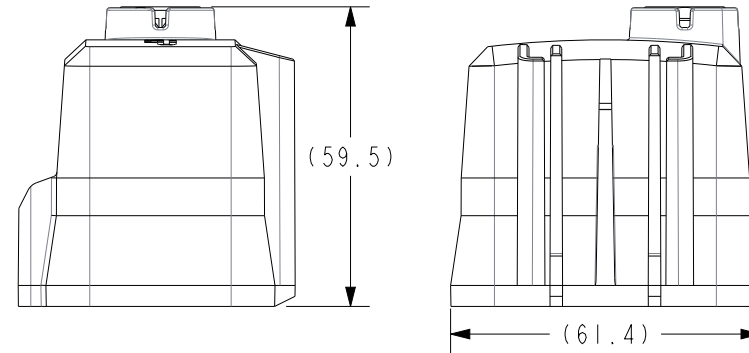
COVER & ACCESSORY OPTIONS

FRH-A24-C
COVER - PDM, FRH 24 POS

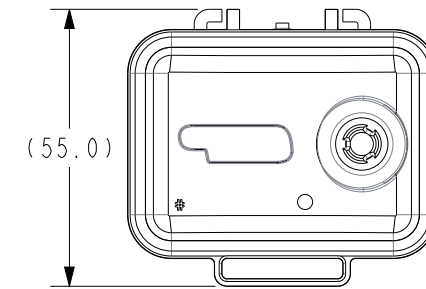
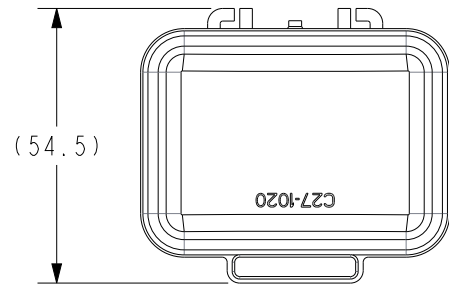


SCALE 1:1.5

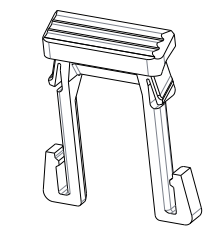
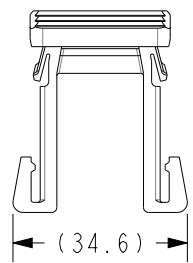
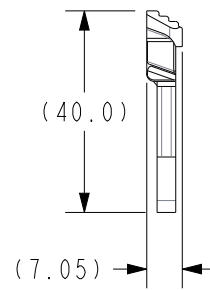
SC42-2028A-A001
COVER WITH VENT - FRH - A24



SCALE 1:1.5

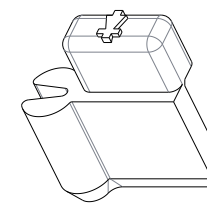
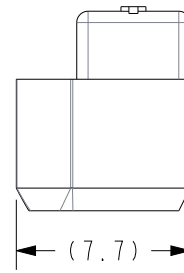
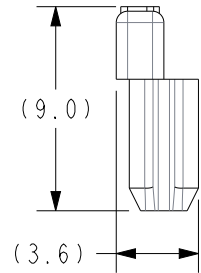


FRH-A-CPA
CPA - PDM, FRH



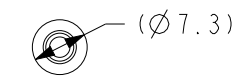
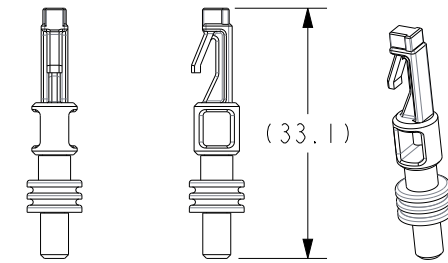
SCALE 1:1.5

PDM-TK
DIODE KEY

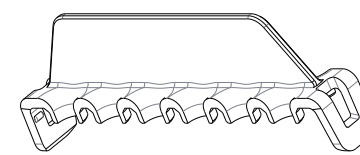
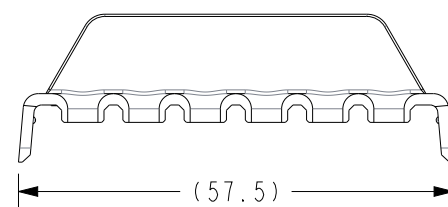
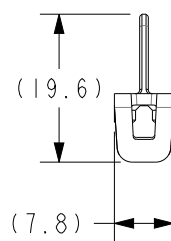


SCALE 3:1

SC55-2000A-A001
PLUG AND SEAL - PDM
CAVITY PLUG - METRIPACK 280



FRH-A12-T
TPA - PDM, FRH

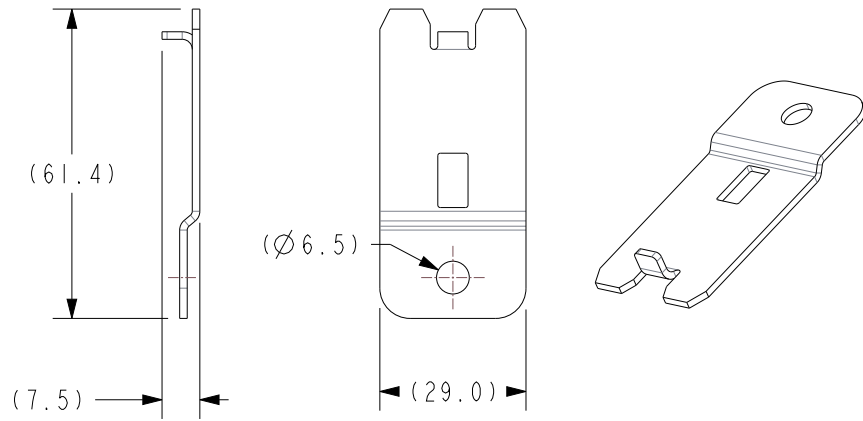


GEP POWER PRODUCTS		16830 Pheasant Drive Brookfield, WI 53005		
PART NO:		FRH-A24 PDM SERIES (SALES)		
DESCRIPTION:		FRH-A24 PDM SERIES (SALES)		
CUSTOMER:		STANDARD		
METRIC (MM)	REV	SHEET	SCALE	SIZE
	4	5 OF 8	1:1	B

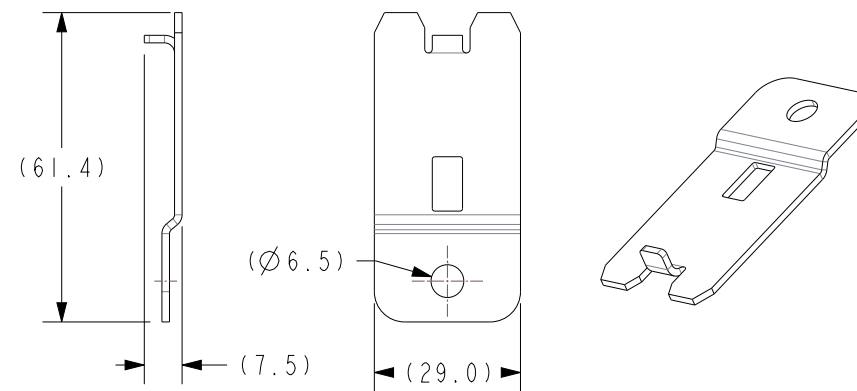
MOUNTING BRACKET OPTIONS

FOR NON-STANDARD MOUNTING OPTIONS EMAIL
GEPENGINEERING@GEPPOWERPRODUCTS.COM TO REVIEW

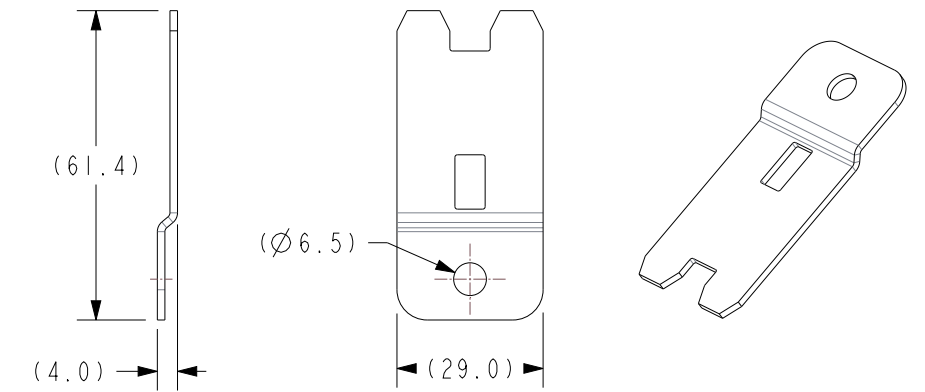
FRH-A12-MB-A1
BRACKET - PDM,FRH,FLAT WITH ANTI-ROTATION, ZINC STEEL



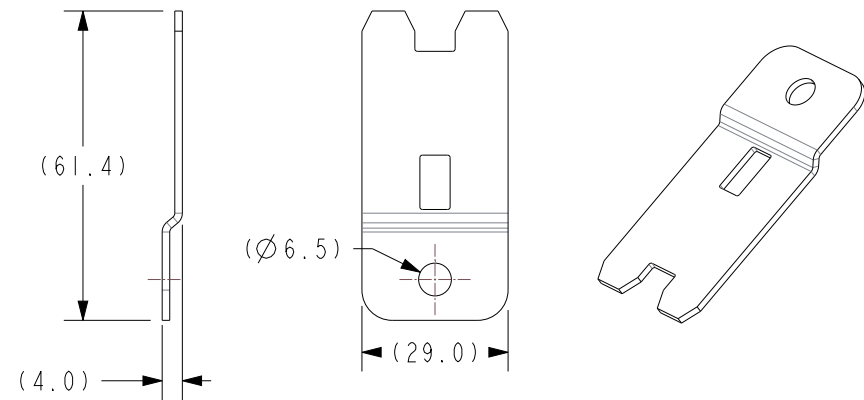
FRH-A12-MB-A2
BRACKET - PDM, FRH, FLAT WITH ANTI-ROTATION, STAINLESS 304



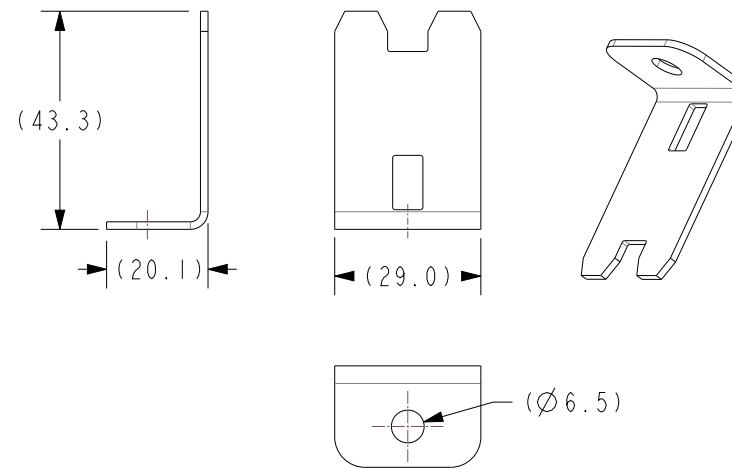
FRH-A12-MB-B1
BRACKET - PDM, FRH, FLAT WITHOUT ANTI-ROTATION, ZINC STEEL



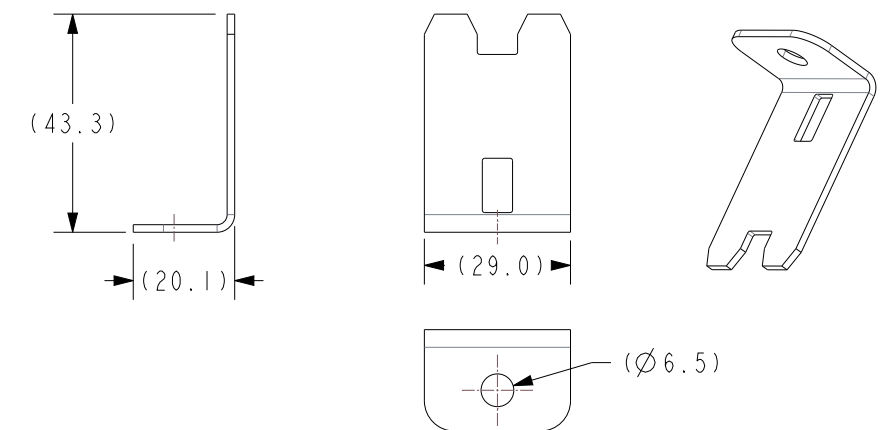
FRH-A12-MB-B2
BRACKET - PDM, FRH, FLAT WITHOUT ANTI-ROTATION, STAINLESS 304



FRH-A12-MB-C1
BRACKET - PDM, FRH, 90° BENT, ZINC STEEL



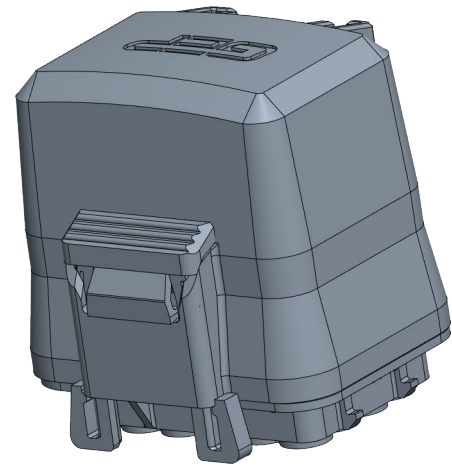
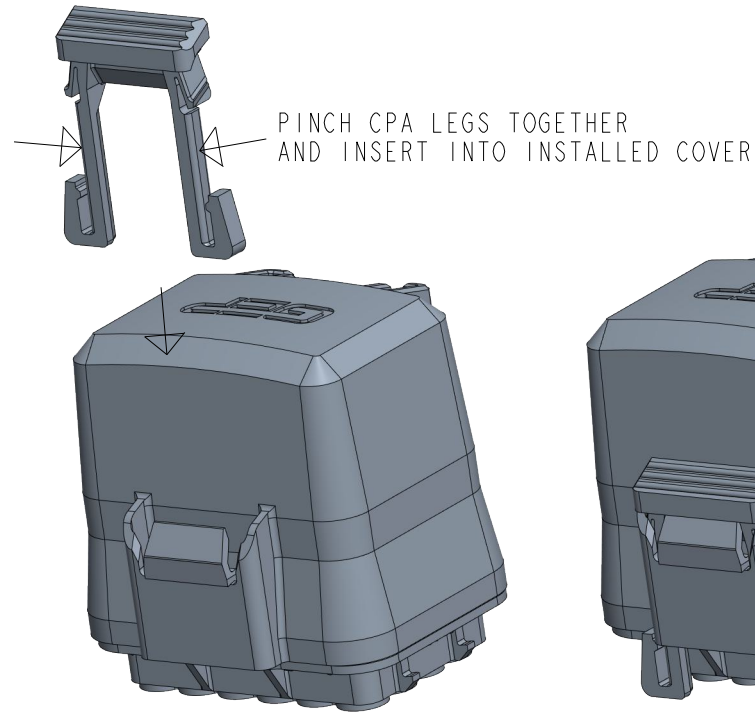
FRH-A12-MB-C2
BRACKET - PDM, FRH, 90° BENT, STAINLESS 304



		16830 Pheasant Drive Brookfield, WI 53005		
PART NO:		FRH-A24 PDM SERIES (SALES)		
DESCRIPTION:		FRH-A24 PDM SERIES (SALES)		
CUSTOMER:		STANDARD		
METRIC (MM)	REV	SHEET	SCALE	SIZE
	4	6 OF 8	1:1.5	B

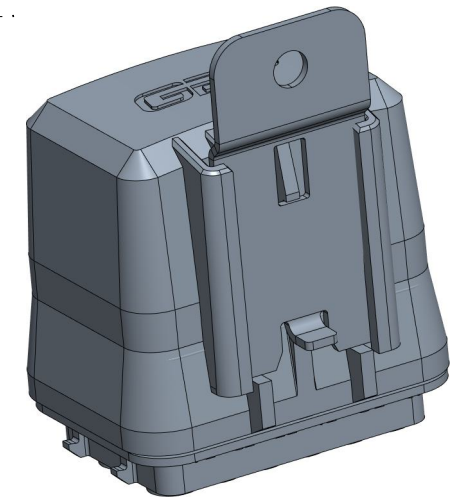
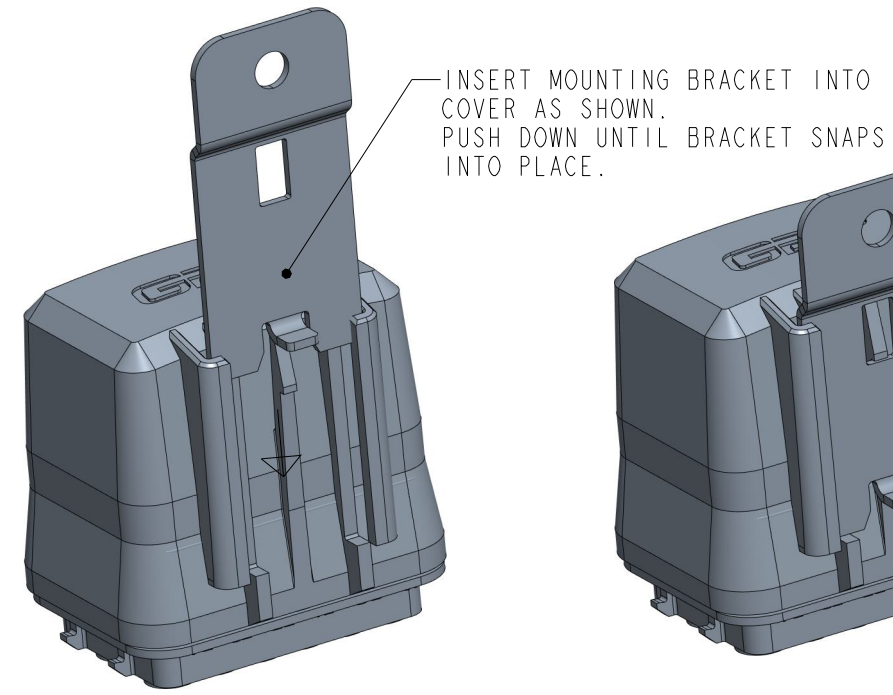
ACCESSORY ASSEMBLY INSTRUCTIONS

CPA INSTALLATION



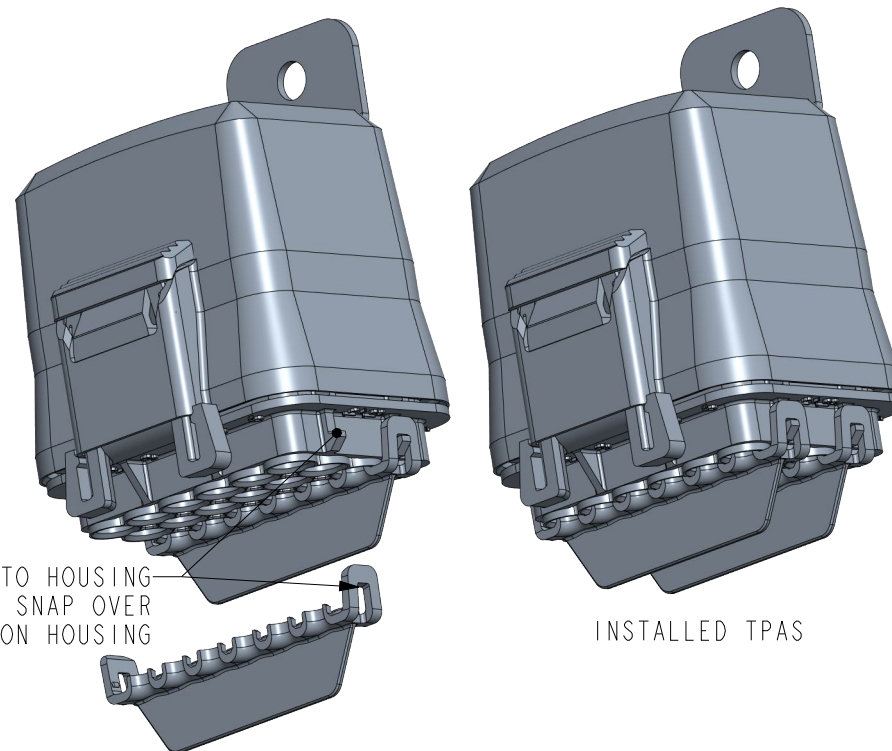
INSTALLED CPA

MOUNTING BRACKET INSTALLATION



INSTALLED MOUNTING BRACKET

TPA INSTALLATION

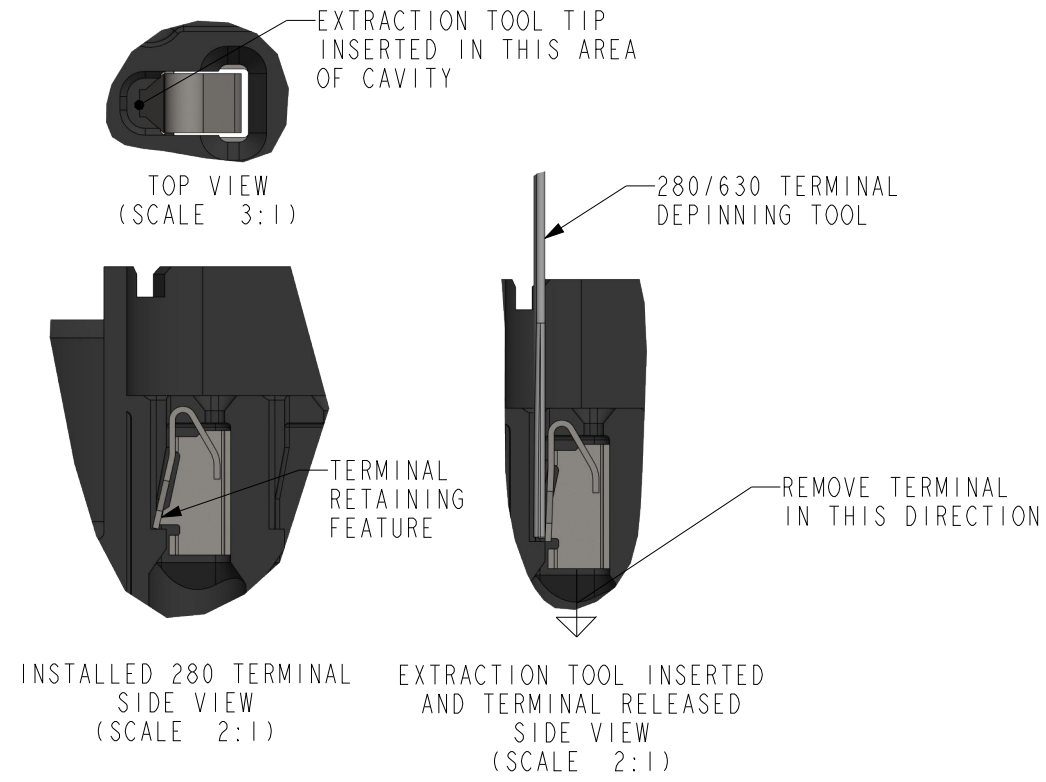


INSTALLED TPAS

GEP POWER PRODUCTS		16830 Pheasant Drive Brookfield, WI 53005		
PART NO:	FRH-A24 PDM SERIES (SALES)			
DESCRIPTION:	FRH-A24 PDM SERIES (SALES)			
CUSTOMER:	STANDARD			
METRIC (MM)	REV 4	SHEET 7 OF 8	SCALE 1:1.25	SIZE B

DEPINNING INSTRUCTIONS

280 TERMINAL DEPINNING



		16830 Pheasant Drive Brookfield, WI 53005		
PART NO:		FRH-A24 PDM SERIES (SALES)		
DESCRIPTION:		FRH-A24 PDM SERIES (SALES)		
CUSTOMER:		STANDARD		
METRIC (MM)	REV	SHEET	SCALE	SIZE
	4	8 OF 8	1:1	B