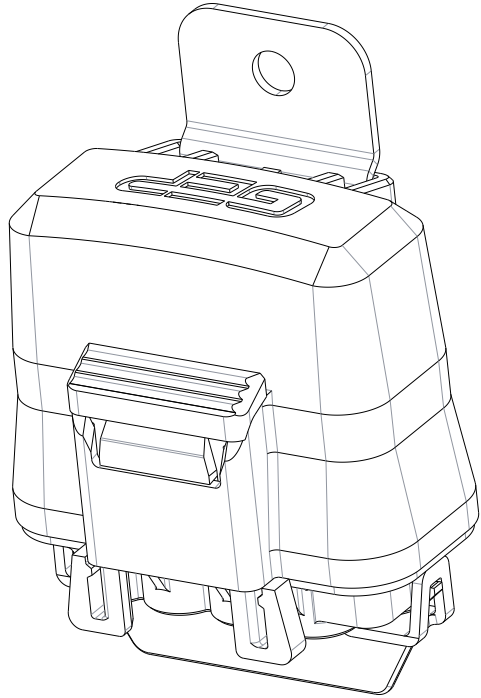


REV	REVISION DETAILS	ECO	DATE	BY	ABY
0	INITIAL RELEASE	NP-002993	27OCT2020	JWK	JJW
1	UPDATED TO LATEST DRAWING STANDARDS	NP-006107	24APR2024	JWK	JML
2	UPDATED IMAGES, NOTES, TABLE B. ADDED VENTED COVER OPTION TO SHEET 5.	NP-007408	01MAY2026	JWK	JML



ISO VIEW
FOR REF ONLY

CONFIDENTIAL

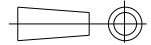
The information contained in this document is the property of GEP Power Products. It is not for public disclosure. Possession of the information does not convey any right to loan, sell or disclose the information. Unauthorized reproduction or use of the information is prohibited. This document is to be returned to GEP Power Products upon completion of the purpose for which it is loaned or upon request.

CRITICAL DIMENSIONS ON FEATURES TO BE CHECKED DURING ANY SET-UP ADJUSTMENTS, TOOL CHANGES, OR ANNUAL MAINTENANCE ON TOOLING.

DIMENSIONS OR FEATURES TO BE CHECKED FROM RUN-TO-RUN

TOLERANCES UNLESS OTHERWISE SPECIFIED

THIRD ANGLE PROJECTION



METRIC TOL

ENGLISH TOL

ANGULAR TOL = $\pm 2^\circ$
FRACTION TOL = $\pm 1/64$ IN

1 PL DEC. = $\pm .25$
2 PL DEC. = $\pm .13$

2 PL DEC. = $\pm .01$
3 PL DEC. = $\pm .005$

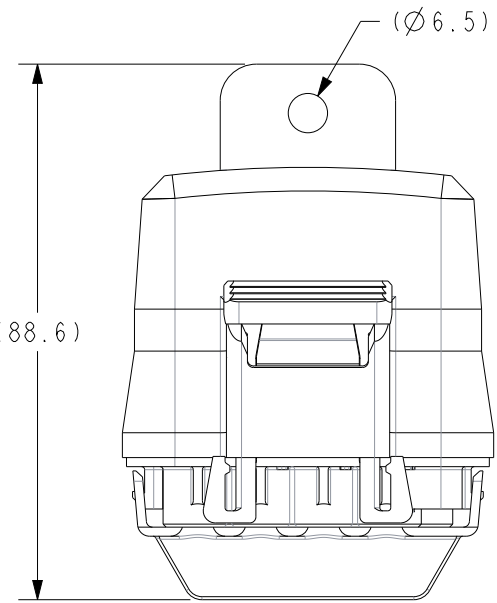
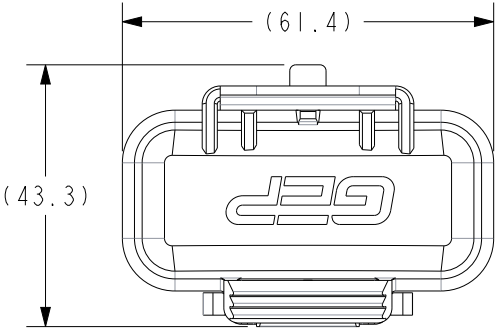
DIMENSIONS INSIDE PARENTHESES OR CONTAINING "REF" ARE FOR REFERENCE ONLY.

COPYRIGHT - GEP POWER PRODUCTS

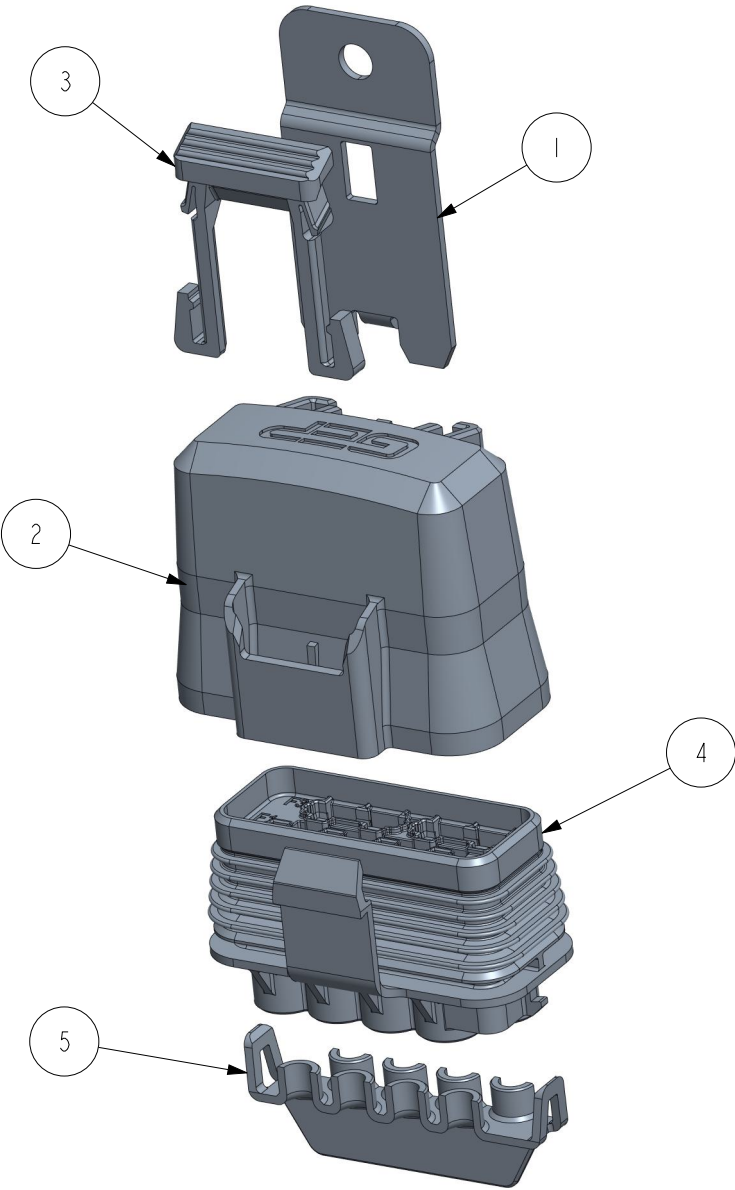
This is unpublished work. The disclosure of this work is limited to a select personnel. Further dissemination or disclosure to the public is PROHIBITED. This unpublished work is protected by Federal Copyright law and all rights thereunder are reserved by GEP Power Products.

		16830 Pheasant Drive Brookfield, WI 53005		
PART NO:		FRH - 4-WAY ATC SERIES (SALES)		
DESCRIPTION:		FRH - 4-WAY ATC SERIES		
CUSTOMER:		STANDARD		
METRIC (MM)	REV	SHEET	SCALE	SIZE
	2	1 OF 8	1:1	B

EXAMPLE CONFIGURATION & NOTES



EXAMPLE CONFIGURATION DIMENSIONS WITH DIMENSIONAL INFO



EXAMPLE CONFIGURATION EXPLODE VIEW

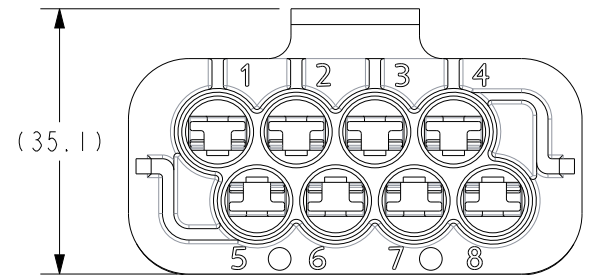
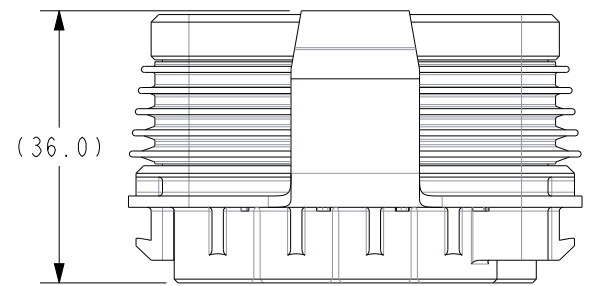
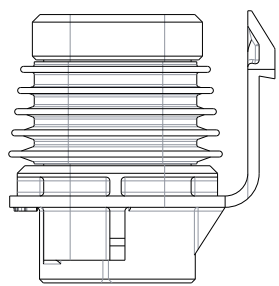
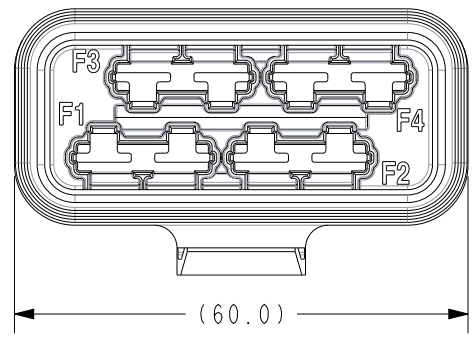
- NOTES:
1. BASE, COVER, & CPA MATERIAL: UNFILLED PBT
 2. TPA MATERIAL: NYLON
 3. COLORS: HOUSING & COVER - BLACK
SEAL - BLUE (OR RED IF MANUFACTURED BEFORE AUGUST 2026)
CPA, TPA - BLUE
 4. BRACKET MATERIAL: ZINC PLATED STEEL OR STAINLESS STEEL (SEE PART DESCRIPTION)
 5. DESIGNED TO USE DELPHI 630 METRI-PACK TERMINALS AND DELHI 480 METRI-PACK SEALS (SEE TABLE B)
 6. RoHS AND REACH COMPLIANT

EXAMPLE CONFIGURATION BOM			
ITEM	DESCRIPTION	PART NO.	QTY
1	BRACKET - PDM - FRH - FLAT WITH ANTI-ROTATION - ZINC STEEL	FRH-A12-MB-A1	1
2	COVER - PDM, FRH, 12 POS, GEP	FRH-A12-C	1
3	CPA - PDM - FRH	FRH-A-CPA	1
4	HOUSING AND SEAL - PDM, FRH, 4-WAY ATC	SC42-2013A-A001	1
5	TPA - PDM, FRH, 4-WAY ATC	SC38-2008A-B003	1

GEP POWER PRODUCTS		16830 Pheasant Drive Brookfield, WI 53005		
PART NO:	FRH - 4-WAY ATC SERIES (SALES)			
DESCRIPTION:	FRH - 4-WAY ATC SERIES			
CUSTOMER:	STANDARD			
METRIC (MM)	REV 2	SHEET 2 OF 8	SCALE 1:1.25	SIZE B

HOUSING W/SEAL OPTIONS

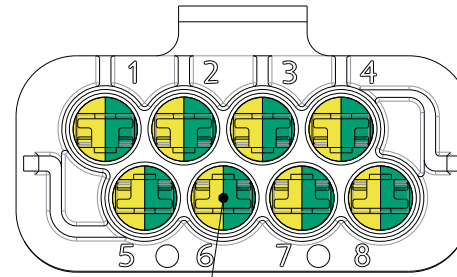
SC42-2013A-A001
HOUSING AND SEAL - PDM, FRH, 4-WAY ATC



GEP POWER PRODUCTS		16830 Pheasant Drive Brookfield, WI 53005		
PART NO:		FRH - 4-WAY ATC SERIES (SALES)		
DESCRIPTION:		FRH - 4-WAY ATC SERIES		
CUSTOMER:		STANDARD		
METRIC (MM)	REV	SHEET	SCALE	SIZE
	2	3 OF 8	1:1	B

HOUSING TERMINALS AND SEALS

SC42-2013A-A001
HOUSING AND SEAL - PDM, FRH, 4-WAY ATC



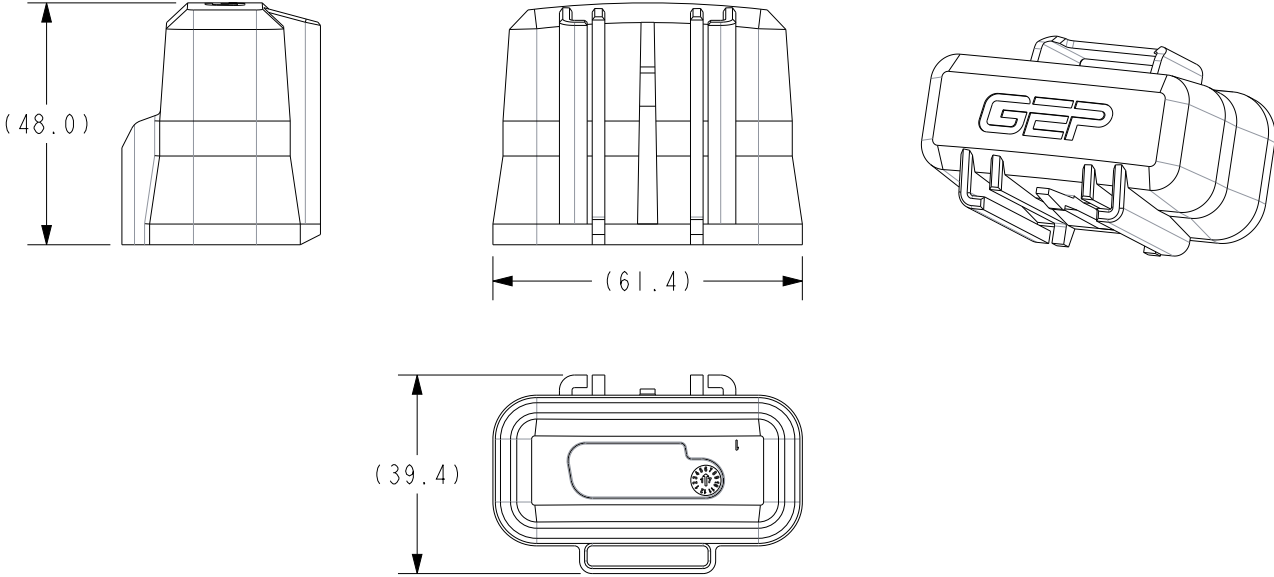
630 CAVITIES
SEE TABLE B FOR TERMINALS
AND CABLE SEALS

Table B			REV 2
APTIV (DELPHI) 630 METRI-PACK TERMINALS			
PART NUMBER	RANGE (mm ²)	MATERIAL	PLATING
15317331	4.00-6.00	TIN BRASS	TIN
12052456	3.00-5.00	TIN BRASS	TIN
12052455	1.00-2.00	TIN BRASS	TIN
12052457	0.50-0.80	TIN BRASS	TIN
15317332	4.00-6.00	BERYLLIUM COPPER	SILVER/NICKEL
15305232	3.00-5.00	BERYLLIUM COPPER	SILVER/NICKEL
APTIV (DELPHI) 480 METRI-PACK CABLE SEALS (REF. ONLY)			
NOTE: 630 CAVITIES IN THIS HOUSING ARE DESIGNED TO BE USED WITH 480 SERIES CABLE SEALS			
PART NUMBER	CABLE DIA.	MATERIAL	COLOR
15363779	1.20-2.00	SILICONE	YELLOW
15324991	1.60-2.15	SILICONE	YELLOW
15327998	2.00-2.70	SILICONE	BLUE
15324988	2.00-2.90	SILICONE	WHITE
15363604	2.00-2.90	SILICONE	WHITE
15324989	2.80-3.90	SILICONE	DK. RED
15327864	2.80-3.80	SILICONE	DK. RED
15363605	3.60-4.50	SILICONE	GREEN
10733145	4.40-5.10	SILICONE	GRAY
15344647	4.40-5.10	SILICONE	GRAY
35232480	PLUG	SILICONE	LT. GREEN
DELPHI METRI-PACK TERMINAL REMOVAL TOOL (FOR REF. ONLY)			
PART # 12094430			

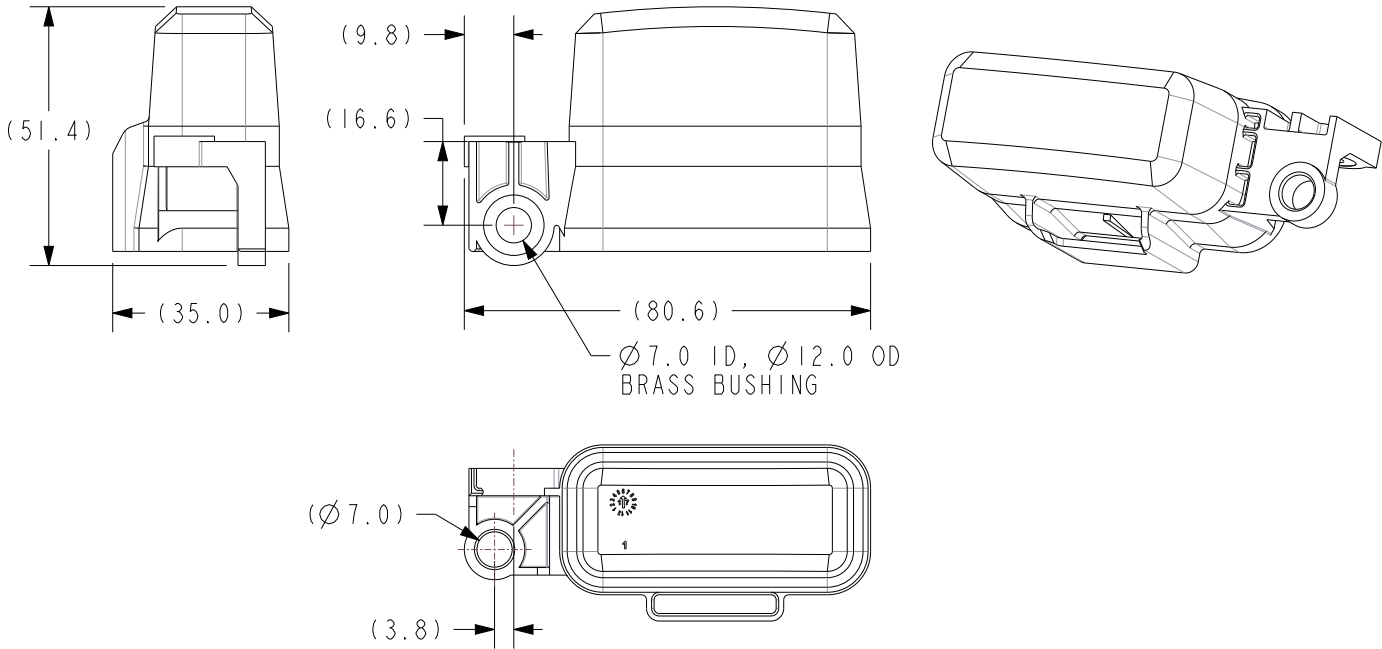
GEP POWER PRODUCTS		16830 Pheasant Drive Brookfield, WI 53005		
PART NO:	FRH - 4-WAY ATC SERIES (SALES)			
DESCRIPTION:	FRH - 4-WAY ATC SERIES			
CUSTOMER:	STANDARD			
METRIC (MM)	REV 2	SHEET 4 OF 8	SCALE 1:1	SIZE B

COVER OPTIONS

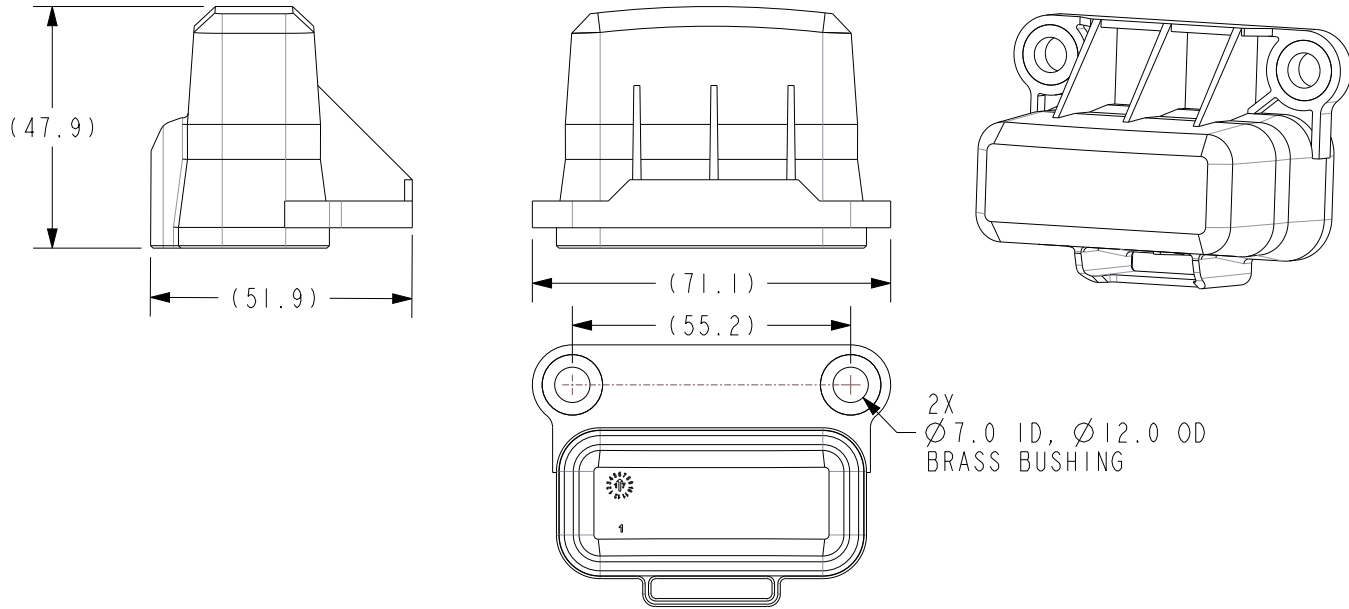
FRH-A12-C
COVER - PDM, FRH, 12 POS, GEP



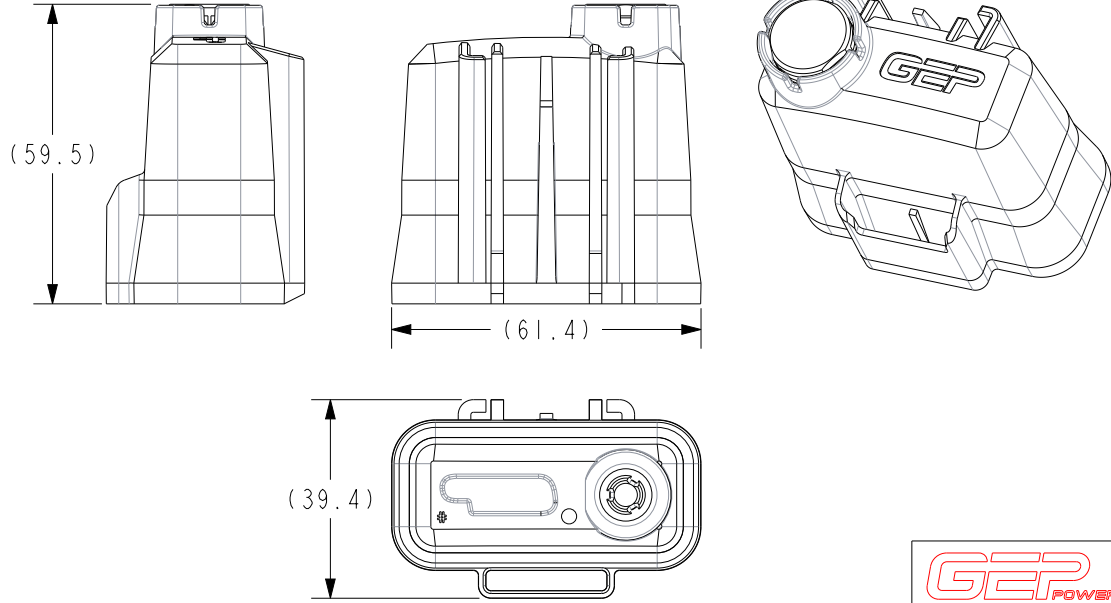
FRH-A12-CB-1
COVER - PDM, FRH 12 POS, SINGLE SIDE MOUNT, PLAIN



FRH-A12-CD-1
COVER - PDM, FRH 12 POS, DOUBLE SIDE MOUNT, PLAIN



SC42-2027A-A001
COVER WITH VENT - FRH - A12

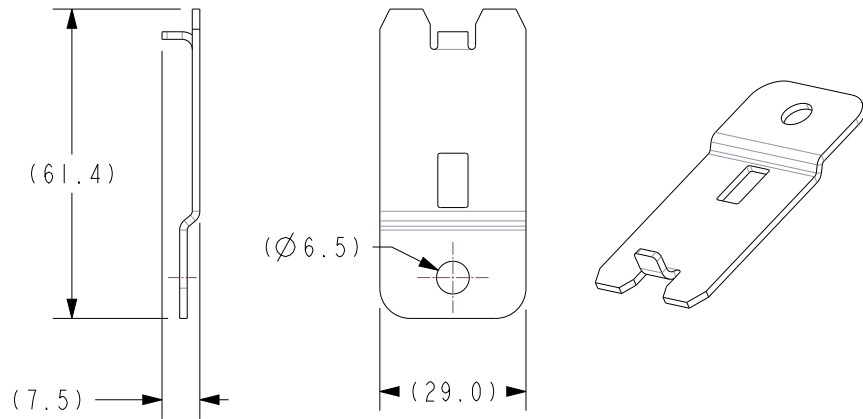


		16830 Pheasant Drive Brookfield, WI 53005		
PART NO:	FRH - 4-WAY ATC SERIES (SALES)			
DESCRIPTION:	FRH - 4-WAY ATC SERIES			
CUSTOMER:	STANDARD			
METRIC (MM)	REV 2	SHEET 5 OF 8	SCALE 1:1.5	SIZE B

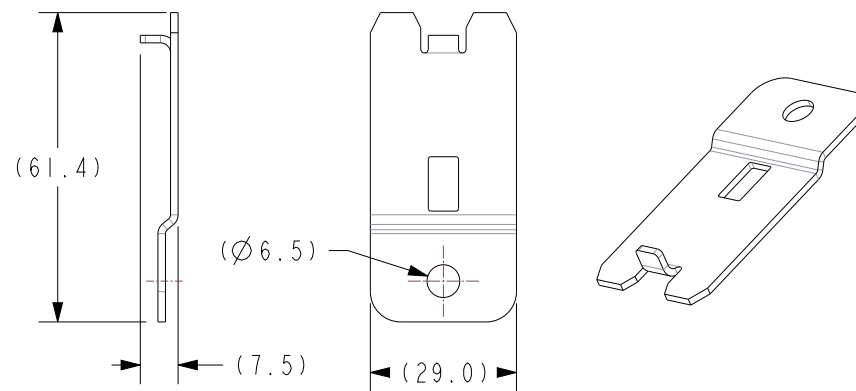
FRH 4-WAY - ACCESSORY OPTIONS

FOR NON-STANDARD MOUNTING OPTIONS EMAIL
GEPENGINEERING@GEPPOWERPRODUCTS.COM TO REVIEW

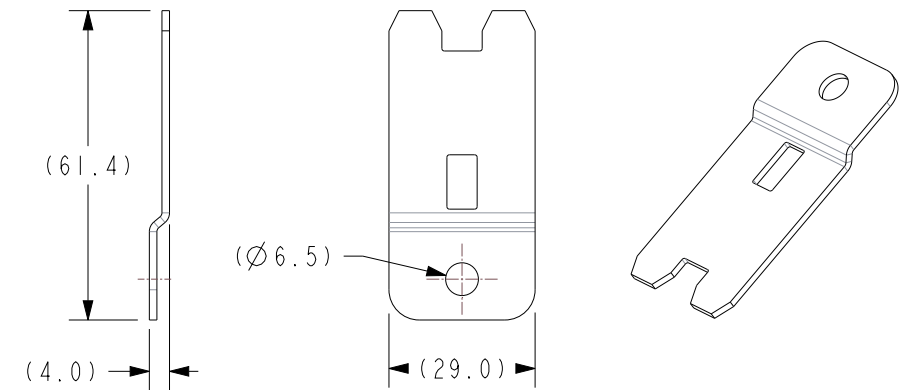
FRH-A12-MB-A1
BRACKET - PDM,FRH,FLAT WITH ANTI-ROTATION, ZINC STEEL



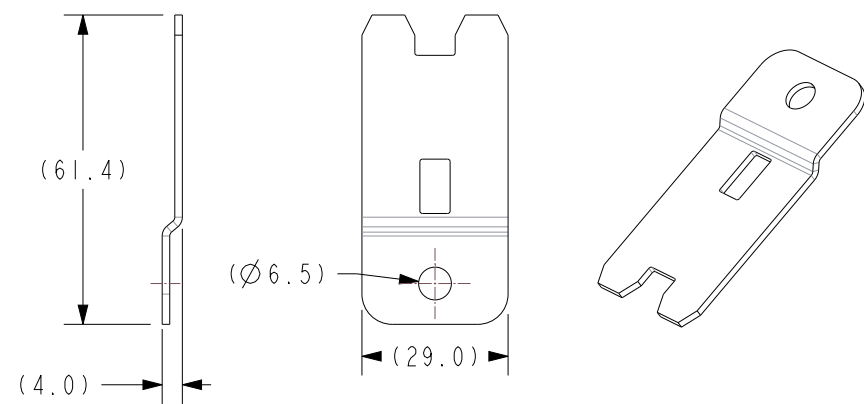
FRH-A12-MB-A2
BRACKET - PDM, FRH, FLAT WITH ANTI-ROTATION, STAINLESS 304



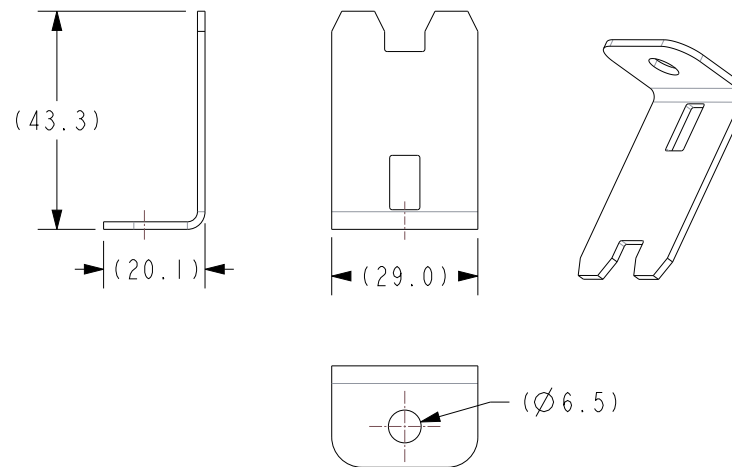
FRH-A12-MB-B1
BRACKET - PDM, FRH, FLAT WITHOUT ANTI-ROTATION, ZINC STEEL



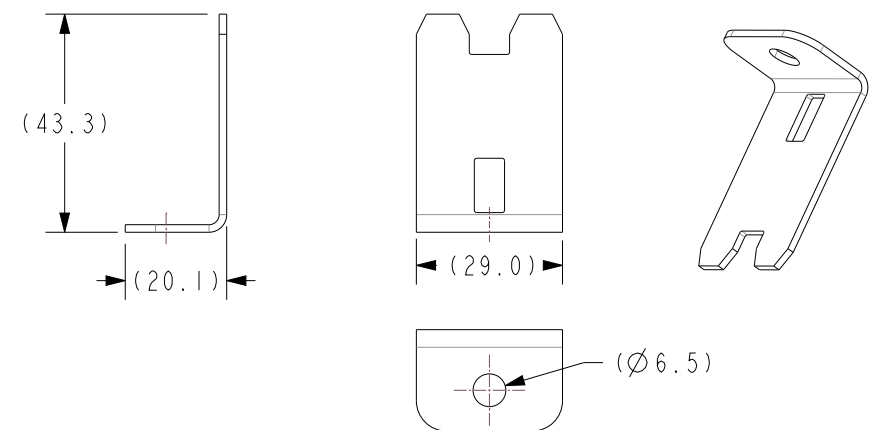
FRH-A12-MB-B2
BRACKET - PDM, FRH, FLAT WITHOUT ANTI-ROTATION, STAINLESS 304



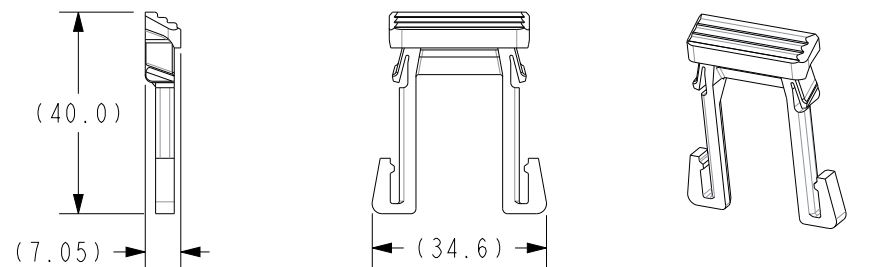
FRH-A12-MB-C1
BRACKET - PDM, FRH, 90° BENT, ZINC STEEL



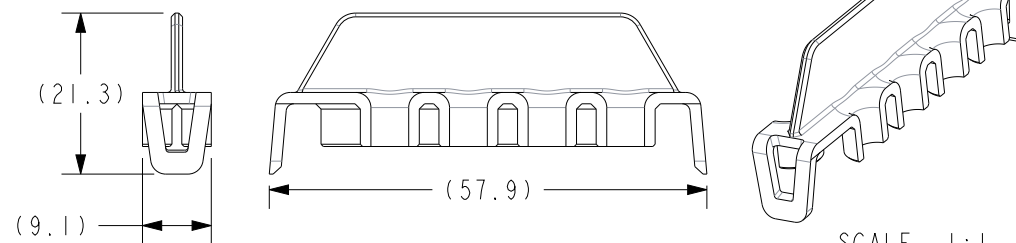
FRH-A12-MB-C2
BRACKET - PDM, FRH, 90° BENT, STAINLESS 304



FRH-A-CPA
CPA - PDM, FRH



SC38-2008A-B003
TPA - PDM, FRH, 4-WAY ATC

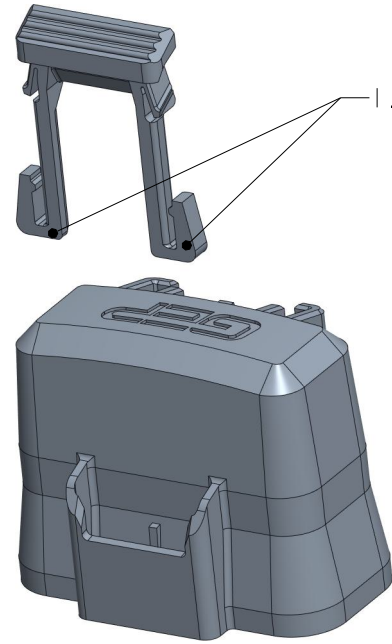


SCALE 1:1

GEP POWER PRODUCTS		16830 Pheasant Drive Brookfield, WI 53005		
PART NO:	FRH - 4-WAY ATC SERIES (SALES)			
DESCRIPTION:	FRH - 4-WAY ATC SERIES			
CUSTOMER:	STANDARD			
METRIC (MM)	REV 2	SHEET 6 OF 8	SCALE 1:1.5	SIZE B

ACCESSORY ASSEMBLY INSTRUCTIONS

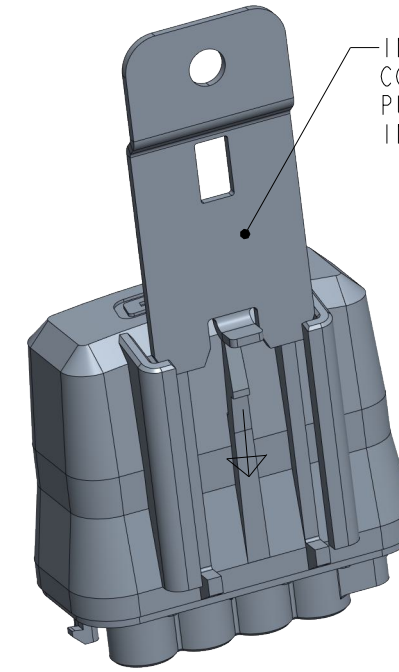
CPA INSTALLATION



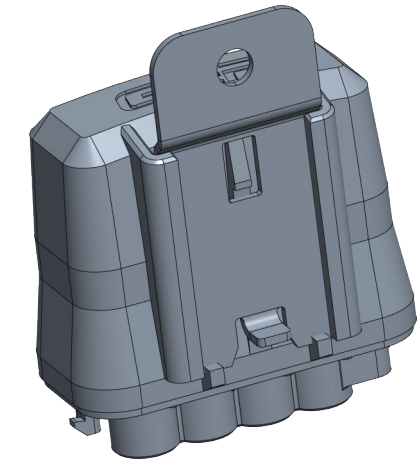
1. PINCH CPA LEGS TOGETHER AND INSERT INTO COVER

CPA INSTALLATION INTO COVER

MOUNTING BRACKET INSTALLATION

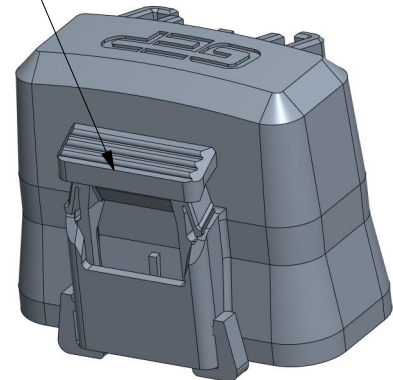


INSERT MOUNTING BRACKET INTO COVER AS SHOWN. PUSH DOWN UNTIL BRACKET SNAPS INTO PLACE.



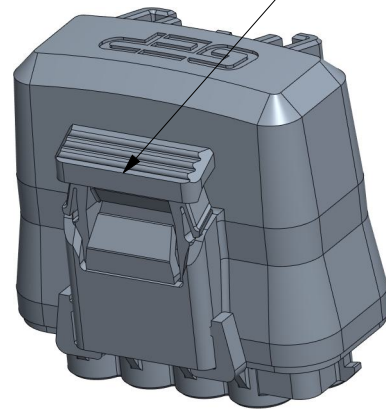
INSTALLED MOUNTING BRACKET

LIFT CPA TO UNLOCKED POSITION PRIOR TO ASSEMBLING TO OR REMOVING FROM HOUSING



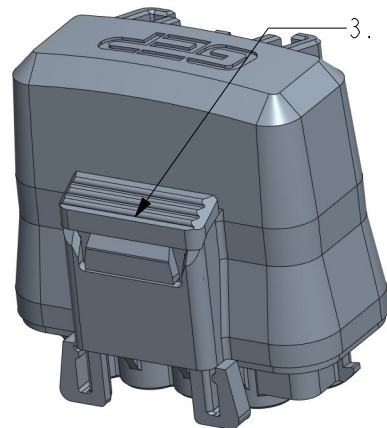
CPA UNLOCKED

2. ASSEMBLE COVER WITH CPA ONTO HOUSING IN UNLOCKED POSITION.



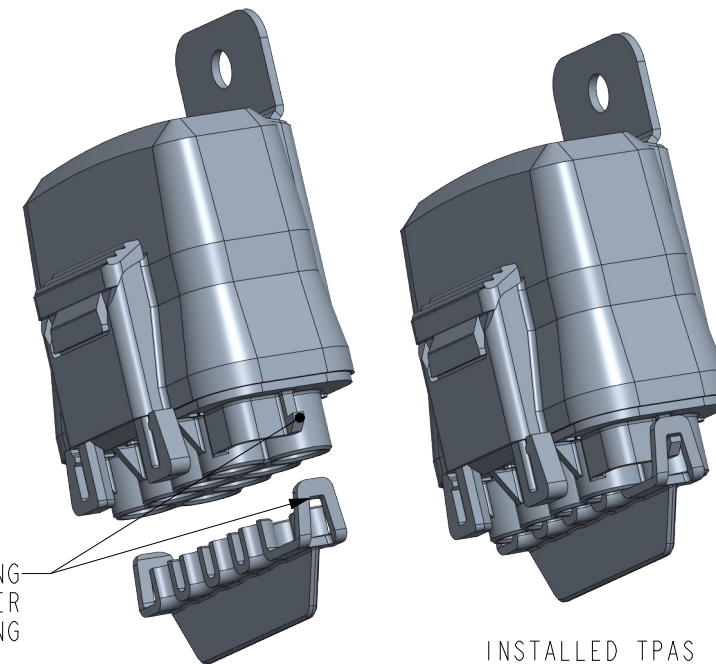
ASSEMBLY TO HOUSING WITH CPA UNLOCKED

3. PUSH CPA DOWN TO LOCK



CPA LOCKED

TPA INSTALLATION



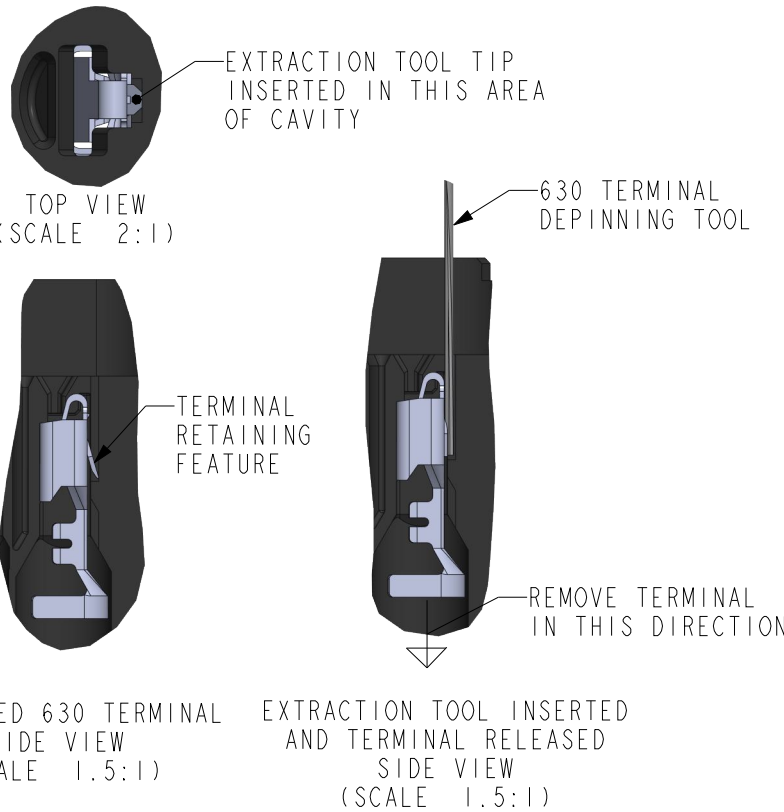
INSERT TPA ONTO HOUSING UNTIL TPA EARS SNAP OVER RETAINING FEATURES ON HOUSING

INSTALLED TPAS

GEP POWER PRODUCTS		16830 Pheasant Drive Brookfield, WI 53005		
PART NO:	FRH - 4-WAY ATC SERIES (SALES)			
DESCRIPTION:	FRH - 4-WAY ATC SERIES			
CUSTOMER:	STANDARD			
METRIC (MM)	REV	SHEET	SCALE	SIZE
	2	7 OF 8	1:1.25	B

DEPINNING INSTRUCTIONS

630 TERMINAL DEPINNING



		16830 Pheasant Drive Brookfield, WI 53005		
PART NO:		FRH - 4-WAY ATC SERIES (SALES)		
DESCRIPTION:		FRH - 4-WAY ATC SERIES		
CUSTOMER:		STANDARD		
METRIC (MM)	REV	SHEET	SCALE	SIZE
	2	8 OF 8	1:1	B