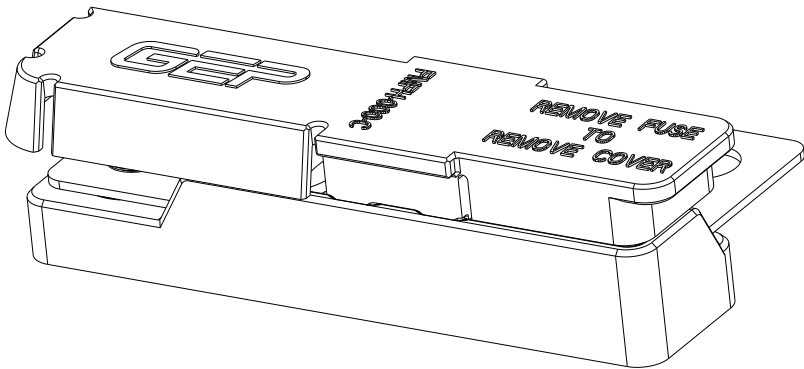




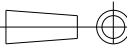
REV	REVISION DETAILS	ECO	DATE	BY	ABY
0	INITIAL RELEASE	NP-006039	03-20-2024	JWK	JML



ISO VIEW
FOR REF ONLY


CONFIDENTIAL

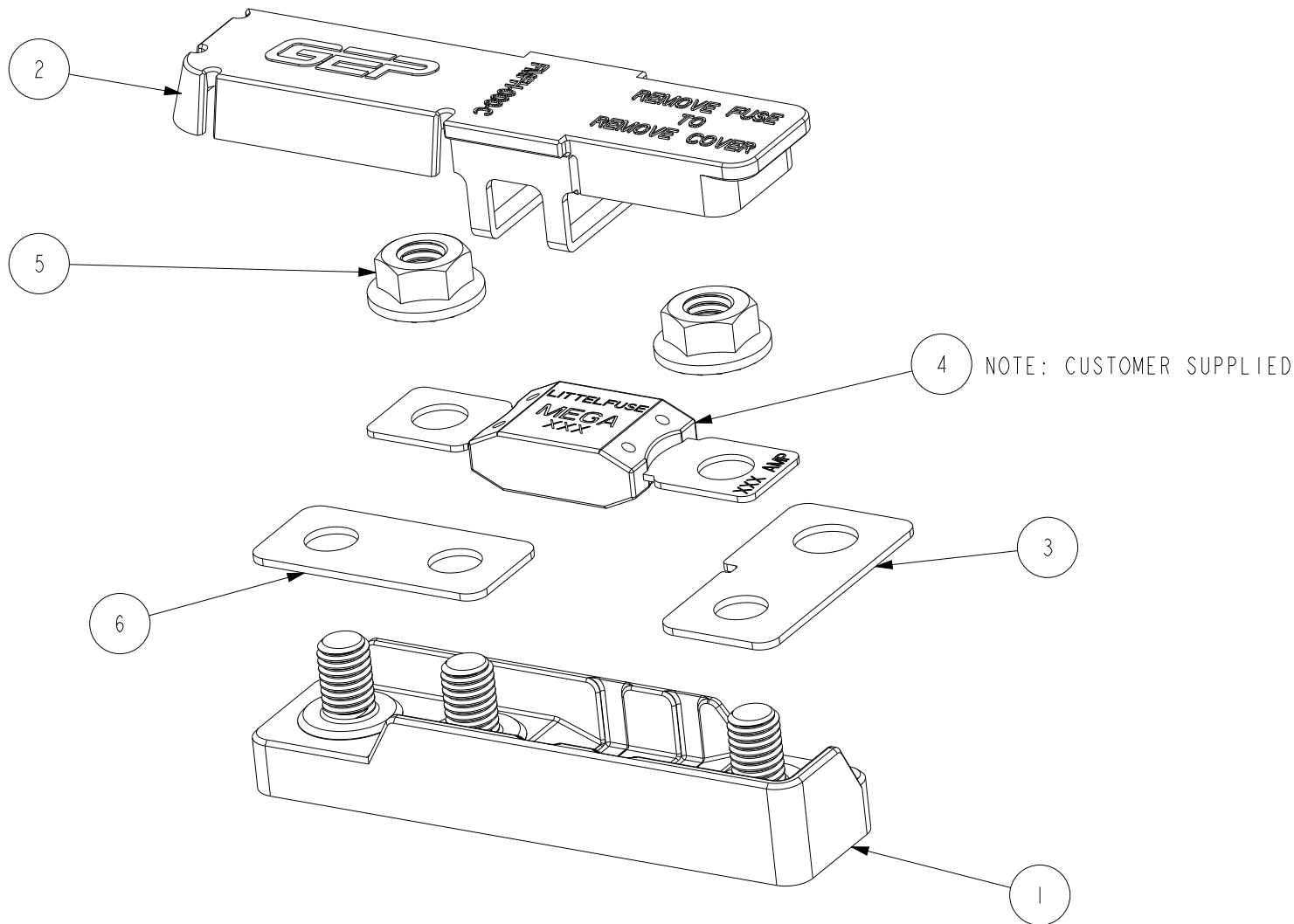
The information contained in this document is the property of GEP Power Products. It is not for public disclosure. Possession of the information does not convey any right to loan, sell or disclose the information. Unauthorized reproduction or use of the information is prohibited. This document is to be returned to GEP Power Products upon completion of the purpose for which it is loaned or upon request.

 CRITICAL DIMENSIONS ON FEATURES TO BE CHECKED DURING ANY SET-UP ADJUSTMENTS, TOOL CHANGES, OR ANNUAL MAINTENANCE ON TOOLING.		 DIMENSIONS OR FEATURES TO BE CHECKED FROM RUN-TO-RUN
TOLERANCES UNLESS OTHERWISE SPECIFIED		THIRD ANGLE PROJECTION 
METRIC TOL	ENGLISH TOL	ANGULAR TOL= $\pm 2^\circ$ FRACTION TOL= $\pm 1/64$ IN
1 PL DEC. = $\pm .25$ 2 PL DEC. = $\pm .13$	2 PL DEC. = $\pm .01$ 3 PL DEC. = $\pm .005$	DIMENSIONS INSIDE PARENTHESES OR CONTAINING "REF" ARE FOR REFERENCE ONLY.

COPYRIGHT - GEP POWER PRODUCTS

This is unpublished work. The disclosure of this work is limited to a select personnel. Further dissemination or disclosure to the public is PROHIBITED. This unpublished work is protected by Federal Copyright law and all rights thereunder are reserved by GEP Power Products.

		16830 Pheasant Drive Brookfield, WI 53005			
PART NO:		FMFH-000-A (SALES)			
DESCRIPTION:		ASSEMBLY - FMFH - NO FUSE - STANDARD COVER AND HARDWARE			
CUSTOMER:		STANDARD			
METRIC (MM)	REV	SHEET	SCALE	SIZE	
	0	1 OF 4	1:1	A	



ASSEMBLY BOM

ITEM	DESCRIPTION	PART NO.	QTY
1	BASE - FMFH FUSE HOLDER	FMFH-B	1
2	COVER FMFH	FMFH-XXX-C	1
3	INPUT BUSBAR FOR FMFH HOLDER	FMFH-BB1	1
4	MEGA FUSE		1
5	NUT - M8, SERRATED FLANGE NUT, STAINLESS STEEL	FMFH-N	2
6	OUTPUT BUSBAR FOR FMFH HOLDER	FMFH-BB2	1

CUSTOMER SUPPLIED



16830 Pheasant Drive
Brookfield, WI 53005

PART NO: FMFH-000-A (SALES)

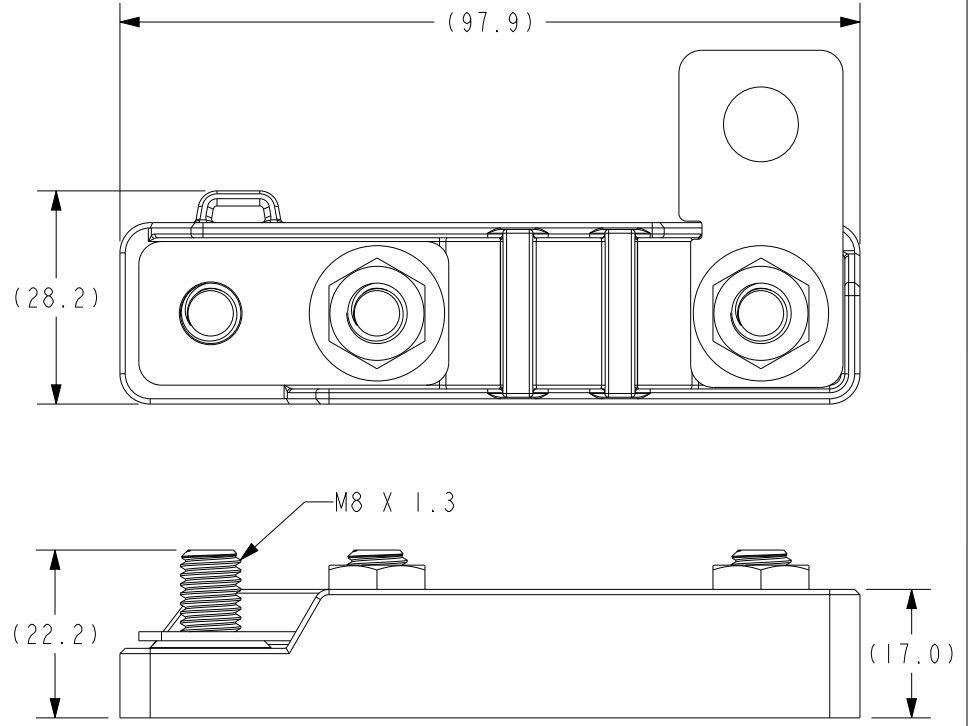
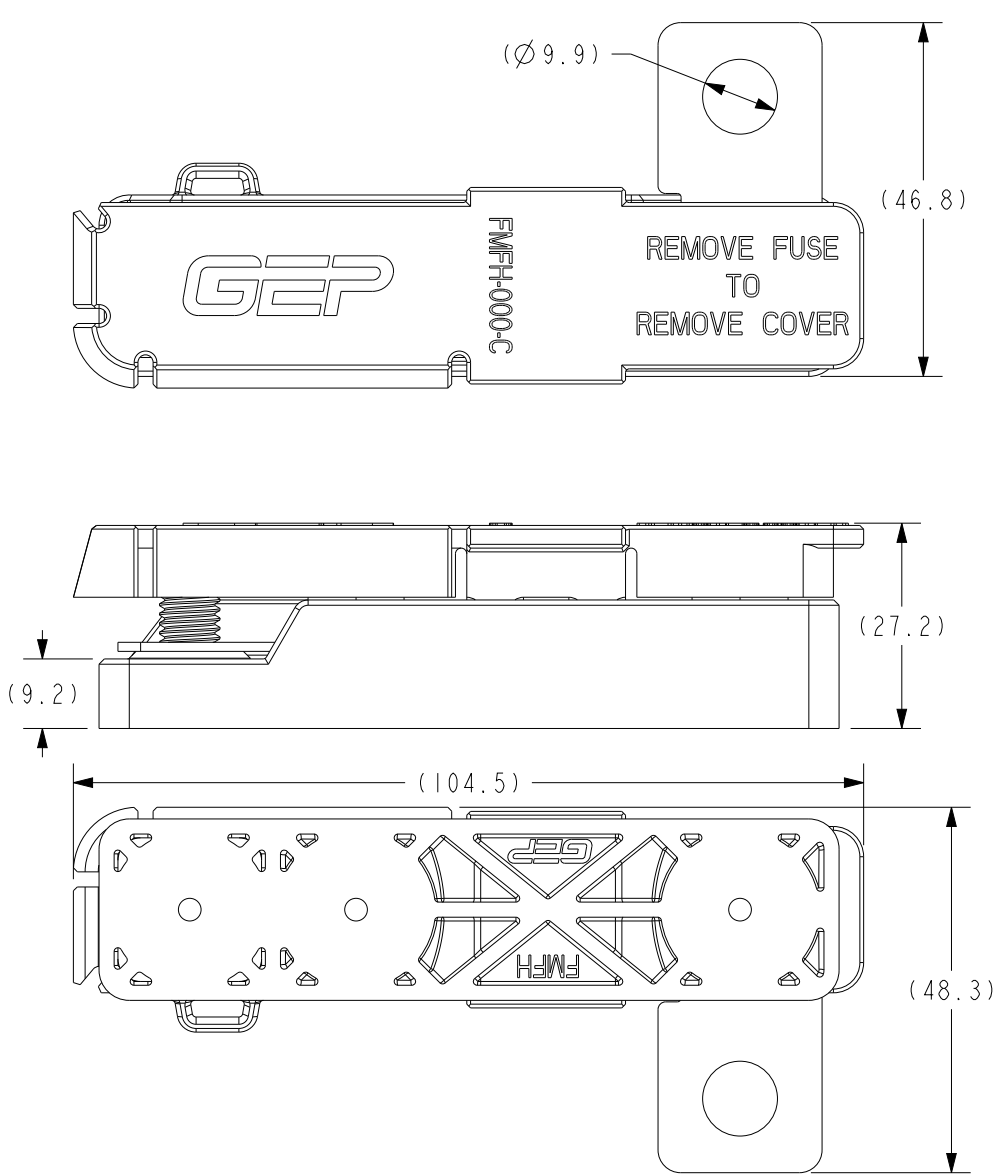
DESCRIPTION: ASSEMBLY - FMFH - NO FUSE - STANDARD COVER AND HARDWARE

CUSTOMER: STANDARD


METRIC (MM)	REV	SHEET	SCALE	SIZE
	0	2 OF 4	1:1	A

2

3



- NOTES:
1. BASE MATERIAL: 40% GLASS FILLED PPS
 2. BASE COLOR: BLACK
 3. COVER MATERIAL: PVC
 4. COVER COLOR: RED
 5. STUD MATERIAL: STAINLESS STEEL
 6. NUT MATERIAL: STAINLESS STEEL
 7. BUSBAR MATERIAL: TIN PLATED COPPER
 8. STUD TORQUE: 15 Nm MAX
 9. RoHS AND REACH COMPLIANT

		16830 Pheasant Drive Brookfield, WI 53005			
PART NO:		FMFH-000-A (SALES)			
DESCRIPTION:		ASSEMBLY - FMFH - NO FUSE - STANDARD COVER AND HARDWARE			
CUSTOMER:		STANDARD			
METRIC (MM)	REV 0	SHEET 3 OF 4	SCALE 1:1	SIZE A	

2

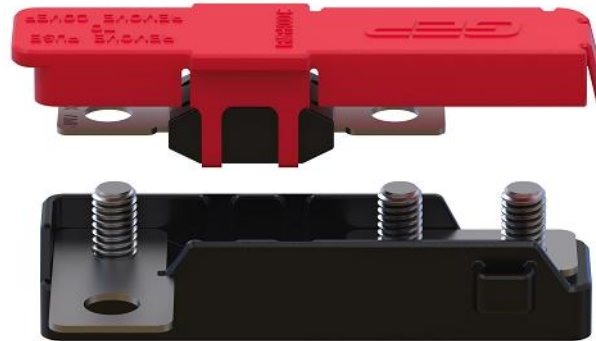
3

ASSEMBLY INSTRUCTIONS

1. SLIDE MEGA FUSE INTO COVER
AS SHOWN



2. ADD COVER/FUSE ASSEMBLY TO
BASE WITH INSTALLED BUSBARS.



3. BEND COVER SIDES UP AS SHOWN AND
ASSEMBLE FLANGE NUT ON BOTH
SIDES OF FUSE. TIGHTEN FLANGE NUTS
USING 1/2" SOCKET. MAX TORQUE 15 Nm



GEP POWER PRODUCTS		16830 Pheasant Drive Brookfield, WI 53005		
PART NO:		FMFH-000-A (SALES)		
DESCRIPTION:		ASSEMBLY - FMFH - NO FUSE - STANDARD COVER AND HARDWARE		
CUSTOMER:		STANDARD		
METRIC (MM)	REV 0	SHEET 4 OF 4	SCALE 1:1	SIZE A