

ATO® Blade Type Fuse Panels Series FP-ATO-SXX

Application:

This compact, surface mounted fuse panel accepts standard ATO blade fuses. The "wire ready" screw and pressure plate design was selected for optimum wire retention. The FP-ATO series is ideal for use in auxiliary power distribution applications.

Specifications:

Rating: 30A max per circuit

Recommended wire size: up to 10 gauge

Termination torque: 14 in lbs.

Materials: Fuse panel housing-thermoplastic

Screw and pressure plate-nickel plated steel

Terminals-nickel plated 110 copper

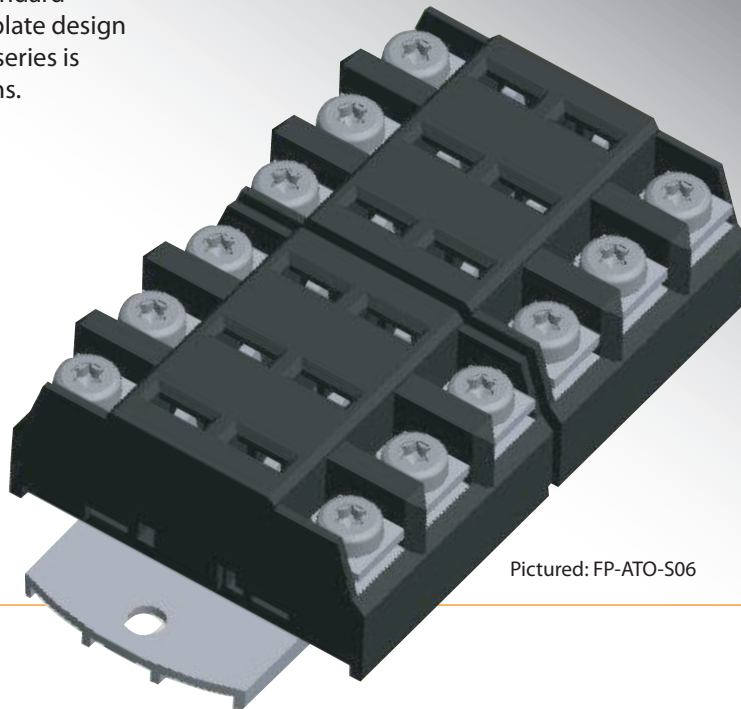
Mounting rail-aluminum

Options:

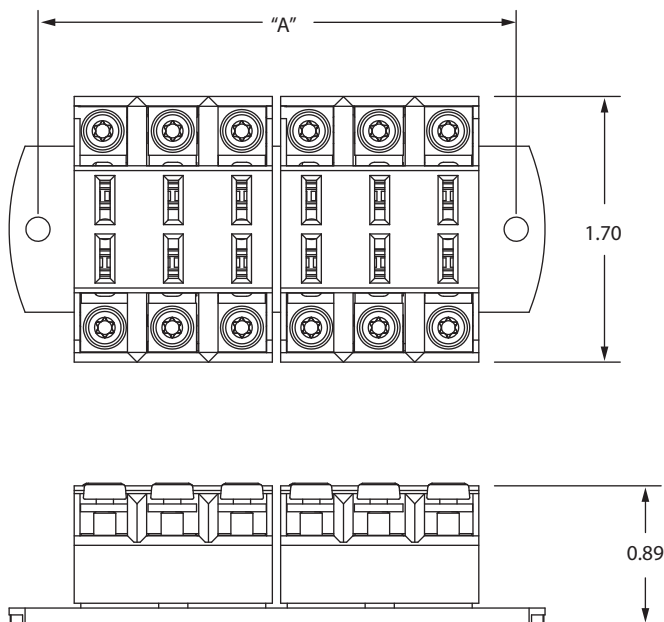
Fuse panel can be expanded in increments of 3 fuse positions

Consult factory for bussed options

- RoHS compliant



Pictured: FP-ATO-S06



Part number scheme:

FP-ATO-SXX

└─ Number of fuse positions

03 (DIM "A" = 1.744")

06 (DIM "A" = 3.052")

09 (DIM "A" = 4.360")

12 (DIM "A" = 5.668")

15 (DIM "A" = 6.976")

Consult factory for larger fuse panels